

Summary of Employment, Demographics, and Commuting Patterns for Citrus County, Florida



**FLORIDA DEPARTMENT *of*
ECONOMIC OPPORTUNITY**

March 2018

Contents

Labor Shed Analysis 3

OnTheMap, Census Bureau..... 3

Florida Department of Economic Opportunity, Bureau of Labor Market Statistics (LMS) 3

Executive Summary 4

People QuickFacts..... 5

Business and Geography QuickFacts 7

Labor Force, Employment, and Unemployment 7

Population..... 7

Where Workers Work in Citrus County..... 8

Work Area Profile Summary..... 9

Work Area Profile Summary - Demographics.....10

Where Workers Live in Citrus County 11

Home Area Profile Summary.....12

Home Area Profile Summary - Demographics.....13

Labor Inflow/Outflow Map 14

Labor Inflow/Outflow Summary 15

Work Destination Summary.....17

Home Destination Summary 18

Labor Shed Analysis

A labor shed analysis is defined as where workers work and where workers live relative to a user-defined selection area. This analysis helps to determine where a labor market draws its commuting workers. Labor shed studies can draw comparisons between various geographies including state, Congressional District, Metropolitan Statistical Area (MSA), county, Workforce Investment Area (WIA), Zip Code, and Census tract. By indicating how many of the selection area workers work outside the area, labor sheds can help identify potential pools of workers who would be available for work in the user-defined area.

Labor shed studies provide economic developers and existing or prospective employers a tool to understand the local labor market and make informed expansion and site selection decisions. In addition, labor shed studies can help indicate potential impacts from environmental, social, or economic incidents.

OnTheMap, Census Bureau

OnTheMap is a mapping and reporting tool developed by the U.S. Census Bureau showing employment and home locations of workers with companion reports for user-defined areas. It is the first synthetic data product released by the Census Bureau. OnTheMap is an important tool for Florida to perform labor inflow/outflow analyses and provide commuting data to planning and economic development agencies as well as Regional Workforce Boards. OnTheMap data is also used by the Department of Economic Opportunity to help quantify natural disaster impacts for emergency management agencies based on where workers live and where they work.

OnTheMap integrates existing data from state-supplied administrative records on workers and employers with existing federal censuses, surveys, and other administrative records. The state Labor Market Information (LMI) agencies supply key data from unemployment wage records and from businesses each quarter. The Census Bureau merges the state-supplied data with current demographic information to produce the data found in OnTheMap. By combining data from different administrative sources, censuses, and surveys, the Census Bureau produces local employment information that was not previously available.

Florida Department of Economic Opportunity, Bureau of Labor Market Statistics (LMS)

The Florida Department of Economic Opportunity, Bureau of Labor Market Statistics, produces, analyzes, and distributes labor statistics to improve economic decision making. These data are produced as part of the federal/state cooperative statistical program with the U.S. Department of Labor, Bureau of Labor Statistics, and the Employment and Training Administration.

Executive Summary

The analysis of workforce and demographic characteristics, including commuting patterns of Citrus County was conducted to provide economic data on the population and labor force living or working in the county. The report is useful for detailing where workers work and live in order to align resources. This report includes population, labor force, and demographics for Citrus County.

Workers employed in Citrus County are clustered in the Health Care and Social Assistance (23.3%), and Retail Trade (16.0%) industries. Workers living in Citrus County are concentrated in the Health Care and Social Assistance (18.7%), and Retail Trade (15.2%) industries.

A detailed examination of commuting patterns for Citrus County shows that the county has a net outflow of -8,211 workers. Using the latest annual Census data available, there were 30,972 workers employed in Citrus County and 39,183 workers living in Citrus County. Of the workers who lived in the county, 20,949 workers (53.5%) were employed outside the county.

With 53.5% of workers who reside in Citrus County employed outside the county, Citrus County had the 40th highest outflow among Florida counties. Glades County (85.3%) had the highest outflow rate, followed by Gilchrist County (79.7%), and Jefferson County (79.7%). Leon County (18.6%), Miami-Dade County (20.7%), and Duval County (23.2%) had the lowest worker outflow rates.

Of the 20,949 Citrus County workers employed outside the county, the top destination counties are Marion County (3,687 workers), Hernando County (1,976 workers), and Orange County (1,628 workers). Of the 12,738 Citrus County workers living outside the county, the top origin counties are Marion County (2,107 workers), Hernando County (1,776 workers), and Pasco County (829 workers).

Citrus County

People QuickFacts

	Citrus County	Florida	United States
Population			
Population estimates, July 1, 2017, (V2017)	NA	20,984,400	325,719,178
Population estimates, July 1, 2016	143,621	20,612,439	323,127,513
Population estimates base, April 1, 2010	141,236	18,804,592	308,758,105
Population estimates base, April 1, 2010, (V2017)	NA	18,804,594	308,758,105
Population, percent change - April 1, 2010 (estimates base) to July 1, 2017, (V2017)	NA	11.6%	5.5%
Population, percent change - April 1, 2010 (estimates base) to July 1, 2016	1.7%	9.6%	4.7%
Population, Census, April 1, 2010	141,236	18,801,310	308,745,538
Age and Sex			
Persons under 5 years, percent, July 1, 2016	3.8%	5.5%	6.2%
Persons under 5 years, percent, April 1, 2010	3.9%	5.7%	6.5%
Persons under 18 years, percent, July 1, 2016	14.7%	20.1%	22.8%
Persons under 18 years, percent, April 1, 2010	15.9%	21.3%	24.0%
Persons 65 years and over, percent, July 1, 2016	36.0%	19.9%	15.2%
Persons 65 years and over, percent, April 1, 2010	31.9%	17.3%	13.0%
Female persons, percent, July 1, 2016	51.7%	51.1%	50.8%
Female persons, percent, April 1, 2010	51.6%	51.1%	50.8%
Race and Hispanic Origin			
White alone, percent, July 1, 2016(a)	93.3%	77.6%	76.9%
Black or African American alone, percent, July 1, 2016(a)	3.1%	16.8%	13.3%
American Indian and Alaska Native alone, percent, July 1, 2016(a)	0.4%	0.5%	1.3%
Asian alone, percent, July 1, 2016(a)	1.6%	2.9%	5.7%
Native Hawaiian and Other Pacific Islander alone, percent, July 1, 2016(a)	Z	0.1%	0.2%
Two or More Races, percent, July 1, 2016	1.6%	2.1%	2.6%
Hispanic or Latino, percent, July 1, 2016(b)	5.4%	24.9%	17.8%
White alone, not Hispanic or Latino, percent, July 1, 2016	88.5%	54.9%	61.3%
Population Characteristics			
Veterans, 2012-2016	19,824	1,480,133	19,535,341
Foreign born persons, percent, 2012-2016	5.4%	19.9%	13.2%
Legend			
The vintage year (e.g., V2016) refers to the final year of the series (2010 thru 2016). Different vintage years of estimates are not comparable.			
<i>Fact Notes</i>			
(a) Includes persons reporting only one race			
(b) Hispanics may be of any race, so also are included in applicable race categories			
"NA" Not available			
"Z" Value greater than zero but less than half unit of measure shown			

Source: U.S. Census Bureau, State & County QuickFacts.

Citrus County

People QuickFacts (continued)

	Citrus County	Florida	United States
Housing			
Housing units, July 1, 2016	77,900	9,301,642	135,697,926
Housing units, April 1, 2010	78,026	8,989,580	131,704,730
Owner-occupied housing unit rate, 2012-2016	81.8%	64.8%	63.6%
Median value of owner-occupied housing units, 2012-2016	\$114,300	\$166,800	\$184,700
Median selected monthly owner costs -with a mortgage, 2012-2016	\$977	\$1,422	\$1,491
Median selected monthly owner costs -without a mortgage, 2012-2016	\$320	\$466	\$462
Median gross rent, 2012-2016	\$775	\$1,032	\$949
Building permits, 2016	516	116,240	1,206,642
Families & Living Arrangements			
Households, 2012-2016	61,350	7,393,262	117,716,237
Persons per household, 2012-2016	2.25	2.64	2.64
Living in same house 1 year ago, percent of persons age 1 year+, 2012-2016	85.5%	83.9%	85.2%
Language other than English spoken at home, percent of persons age 5 years+, 2012-2016	5.8%	28.3%	21.1%
Education			
High school graduate or higher, percent of persons age 25 years+, 2012-2016	86.7%	87.2%	87.0%
Bachelor's degree or higher, percent of persons age 25 years+, 2012-2016	17.8%	27.9%	30.3%
Health			
With a disability, under age 65 years, percent, 2012-2016	14.4%	8.6%	8.6%
Persons without health insurance, under age 65 years, percent	14.9%	15.3%	10.1%
Economy			
In civilian labor force, total, percent of population age 16 years+, 2012-2016	40.8%	58.5%	63.1%
In civilian labor force, female, percent of population age 16 years+, 2012-2016	38.2%	54.3%	58.3%
Total accommodation and food services sales, 2012 (\$1,000)(c)	114,573	49,817,925	708,138,598
Total health care and social assistance receipts/revenue, 2012 (\$1,000)(c)	819,717	124,061,425	2,040,441,203
Total manufacturers shipments, 2012 (\$1,000)(c)	35,824	96,924,106	5,696,729,632
Total merchant wholesaler sales, 2012 (\$1,000)(c)	D	252,626,608	5,208,023,478
Total retail sales, 2012 (\$1,000)(c)	1,420,997	273,867,145	4,219,821,871
Total retail sales per capita, 2012(c)	\$10,197	\$14,177	\$13,443
Transportation			
Mean travel time to work (minutes), workers age 16 years+, 2012-2016	25.5	26.7	26.1
Income & Poverty			
Median household income (in 2016 dollars), 2012-2016	\$39,054	\$48,900	\$55,322
Per capita income in past 12 months (in 2016 dollars), 2012-2016	\$24,188	\$27,598	\$29,829
Persons in poverty, percent	16.6%	14.7%	12.7%
Legend			
<i>Fact Notes</i>			
(c) Economic Census - Puerto Rico data are not comparable to U.S. Economic Census data			
<i>Value Flags</i>			
"D" Suppressed to avoid disclosure of confidential information			

Source: U.S. Census Bureau, State & County QuickFacts.

Citrus County

Business and Geography QuickFacts

	Citrus County	Florida	United States
Business			
Total employer establishments, 2015	2,715	532,830	7,663,938
Total employment, 2015	27,791	7,777,990	124,085,947
Total annual payroll, 2015 (\$1,000)	938,336	337,074,525	6,253,488,252
Total employment, percent change, 2014-2015	5.8%	4.5%	2.5%
Total nonemployer establishments, 2015	8,892	2,040,333	24,331,403
All firms, 2012	9,705	2,100,118	27,626,360
Men-owned firms, 2012	5,076	1,084,888	14,844,597
Women-owned firms, 2012	3,247	807,817	9,878,397
Minority-owned firms, 2012	876	926,112	7,952,386
Nonminority-owned firms, 2012	8,535	1,121,749	18,987,918
Veteran-owned firms, 2012	1,289	185,756	2,521,682
Nonveteran-owned firms, 2012	7,742	1,846,686	24,070,685
Geography			
Population per square mile, 2010	242.8	350.6	87.4
Land area in square miles, 2010	581.70	53,624.76	3,531,905.43
FIPS Code	12017	12	00

Source: U.S. Census Bureau, State & County QuickFacts.

Labor Force, Employment, and Unemployment

	January 2018				January 2017			
	LABOR	EMPLOY-	UNEMPLOYMENT		LABOR	EMPLOY-	UNEMPLOYMENT	
	FORCE	MENT	LEVEL	RATE (%)	FORCE	MENT	LEVEL	RATE (%)
Workforce Region 10	197,054	186,837	10,217	5.2	197,000	184,941	12,059	6.1
Citrus County	47,378	44,530	2,848	6.0	47,105	43,800	3,305	7.0
Levy County	16,874	16,127	747	4.4	16,848	15,965	883	5.2
Marion County	132,802	126,180	6,622	5.0	133,047	125,176	7,871	5.9
Florida	10,136,000	9,719,000	417,000	4.1	9,961,000	9,483,000	479,000	4.8
United States	160,037,000	152,848,000	7,189,000	4.5	158,676,000	150,527,000	8,149,000	5.1

Source: U.S. Department of Labor, Bureau of Labor Statistics, Local Area Unemployment Statistics.

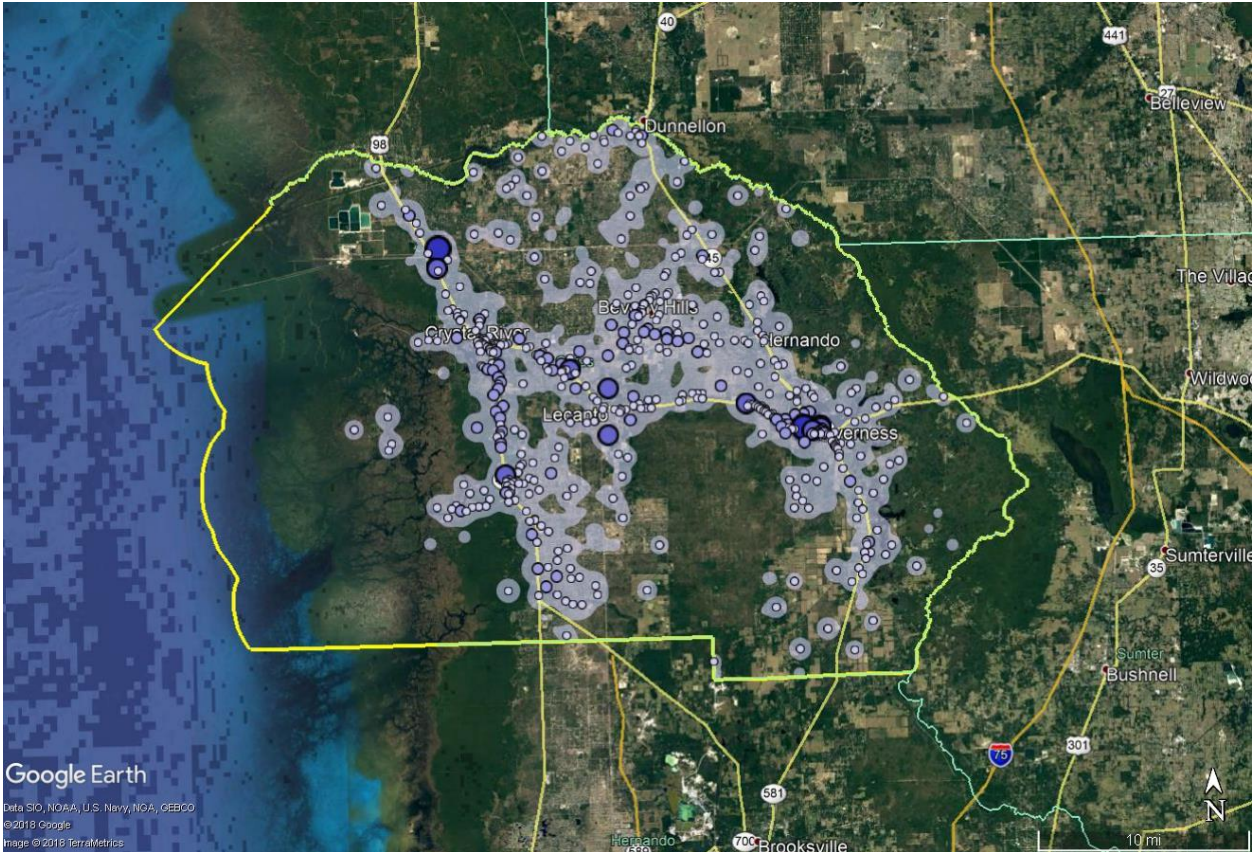
Population

	Population Estimate (as of July 1)						
	2010	2011	2012	2013	2014	2015	2016
Workforce Region 10	513,421	512,524	513,570	514,398	517,761	524,176	532,602
Citrus County	141,263	139,841	139,341	139,063	139,264	140,974	143,621
Levy County	40,721	40,254	39,935	39,535	39,418	39,688	39,961
Marion County	331,437	332,429	334,294	335,800	339,079	343,514	349,020
Florida	18,849,098	19,096,952	19,344,156	19,582,022	19,888,741	20,244,914	20,612,439
United States	309,348,193	311,663,358	313,998,379	316,204,908	318,563,456	320,896,618	323,127,513

Source: U.S. Census Bureau, Population Division.

Citrus County

Where Workers Work in Citrus County



Source: U.S. Census Bureau, OnTheMap Application and Longitudinal Employer-Household Dynamics program.

Map Legend

Job Density [Jobs/Sq. Mile]	Job Count [Jobs/Census Block]
■ 5 - 352	● 1 - 5
■ 353 - 1,394	● 6 - 72
■ 1,395 - 3,131	● 73 - 361
■ 3,132 - 5,563	● 362 - 1,138
■ 5,564 - 8,690	● 1,139 - 2,779

Citrus County

Work Area Profile Summary

	Count	Share
Total Primary Jobs	30,972	100.0%
Jobs by Worker Age		
Age 29 or younger	6,008	19.4%
Age 30 to 54	16,109	52.0%
Age 55 or older	8,855	28.6%
Jobs by Earnings		
\$1,250 per month or less	8,112	26.2%
\$1,251 to \$3,333 per month	13,768	44.5%
More than \$3,333 per month	9,092	29.4%
Jobs by NAICS Industry Sector		
Agriculture, Forestry, Fishing and Hunting	173	0.6%
Mining, Quarrying, and Oil and Gas Extraction	62	0.2%
Utilities	1,043	3.4%
Construction	2,580	8.3%
Manufacturing	421	1.4%
Wholesale Trade	471	1.5%
Retail Trade	4,954	16.0%
Transportation and Warehousing	359	1.2%
Information	302	1.0%
Finance and Insurance	669	2.2%
Real Estate and Rental and Leasing	397	1.3%
Professional, Scientific, and Technical Services	930	3.0%
Management of Companies and Enterprises	24	0.1%
Administration & Support, Waste Management and Remediation	1,997	6.4%
Educational Services	2,830	9.1%
Health Care and Social Assistance	7,203	23.3%
Arts, Entertainment, and Recreation	783	2.5%
Accommodation and Food Services	3,263	10.5%
Other Services (excluding Public Administration)	887	2.9%
Public Administration	1,624	5.2%

Source: U.S. Census Bureau, OnTheMap Application and Longitudinal Employer-Household Dynamics program.

Citrus County

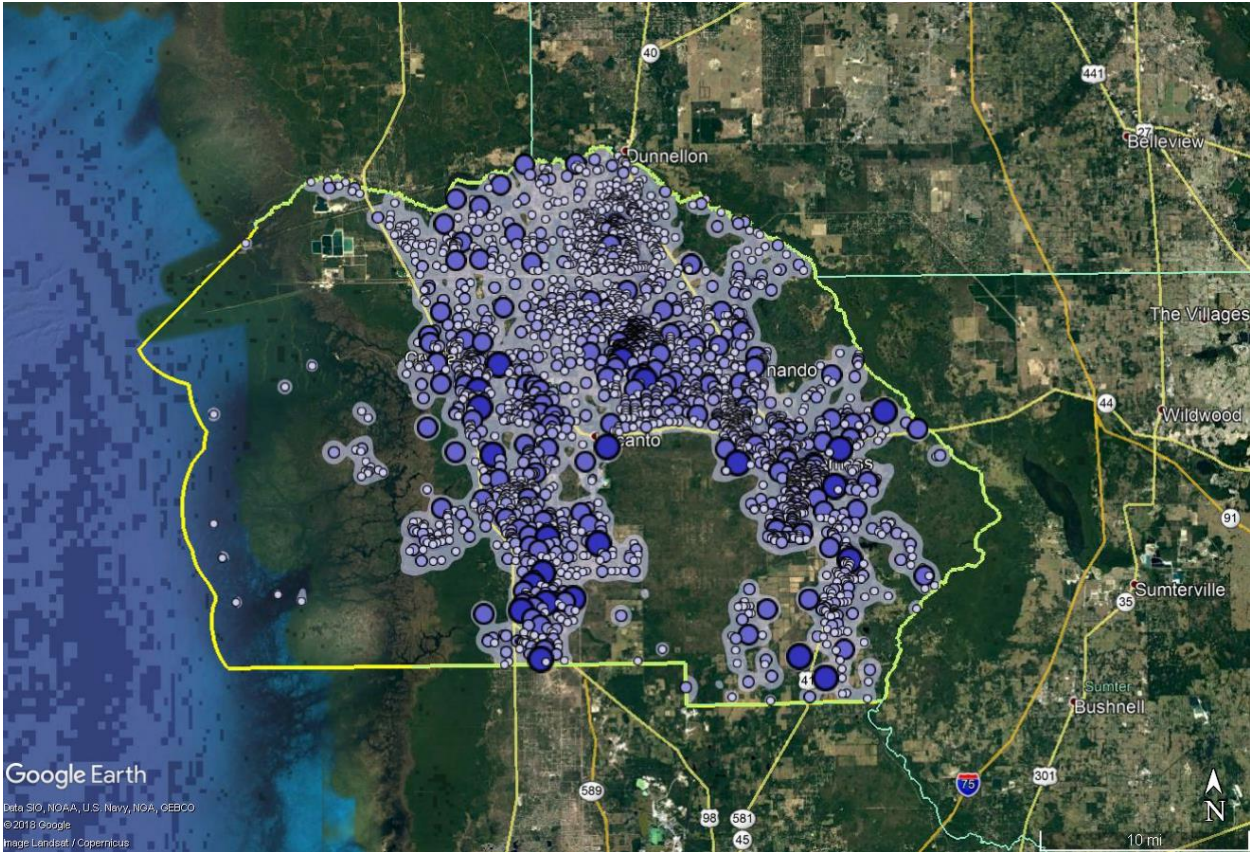
Work Area Profile Summary - Demographics

Jobs by Worker Race		
White Alone	27,906	90.1%
Black or African American Alone	2,067	6.7%
American Indian or Alaska Native Alone	139	0.4%
Asian Alone	547	1.8%
Native Hawaiian or Other Pacific Islander Alone	27	0.1%
Two or More Race Groups	286	0.9%
Jobs by Worker Ethnicity		
Not Hispanic or Latino	28,969	93.5%
Hispanic or Latino	2,003	6.5%
Jobs by Worker Educational Attainment		
Less than high school	3,018	9.7%
High school or equivalent, no college	7,695	24.8%
Some college or Associate degree	8,296	26.8%
Bachelor's degree or advanced degree	5,955	19.2%
Educational attainment not available (workers aged 29 or younger)	6,008	19.4%
Jobs by Worker Sex		
Male	14,425	46.6%
Female	16,547	53.4%

Source: U.S. Census Bureau, OnTheMap Application and Longitudinal Employer-Household Dynamics program.

Citrus County

Where Workers Live in Citrus County



Source: U.S. Census Bureau, OnTheMap Application and Longitudinal Employer-Household Dynamics program.

Map Legend

Job Density [Jobs/Sq. Mile]	Job Count [Jobs/Census Block]
■ 5 - 52	• 1 - 2
■ 53 - 195	• 3 - 13
■ 196 - 433	• 14 - 43
■ 434 - 767	• 44 - 101
■ 768 - 1,196	• 102 - 197

Citrus County

Home Area Profile Summary

	Count	Share
Total Primary Jobs	39,183	100.0%
Jobs by Worker Age		
Age 29 or younger	7,630	19.5%
Age 30 to 54	20,051	51.2%
Age 55 or older	11,502	29.4%
Jobs by Earnings		
\$1,250 per month or less	10,078	25.7%
\$1,251 to \$3,333 per month	17,242	44.0%
More than \$3,333 per month	11,863	30.3%
Jobs by NAICS Industry Sector		
Agriculture, Forestry, Fishing and Hunting	333	0.8%
Mining, Quarrying, and Oil and Gas Extraction	55	0.1%
Utilities	648	1.7%
Construction	3,093	7.9%
Manufacturing	1,378	3.5%
Wholesale Trade	1,120	2.9%
Retail Trade	5,958	15.2%
Transportation and Warehousing	906	2.3%
Information	462	1.2%
Finance and Insurance	1,080	2.8%
Real Estate and Rental and Leasing	668	1.7%
Professional, Scientific, and Technical Services	1,697	4.3%
Management of Companies and Enterprises	251	0.6%
Administration & Support, Waste Management and Remediation	2,373	6.1%
Educational Services	3,447	8.8%
Health Care and Social Assistance	7,338	18.7%
Arts, Entertainment, and Recreation	1,012	2.6%
Accommodation and Food Services	4,012	10.2%
Other Services (excluding Public Administration)	1,139	2.9%
Public Administration	2,213	5.6%

Source: U.S. Census Bureau, OnTheMap Application and Longitudinal Employer-Household Dynamics program.

Citrus County

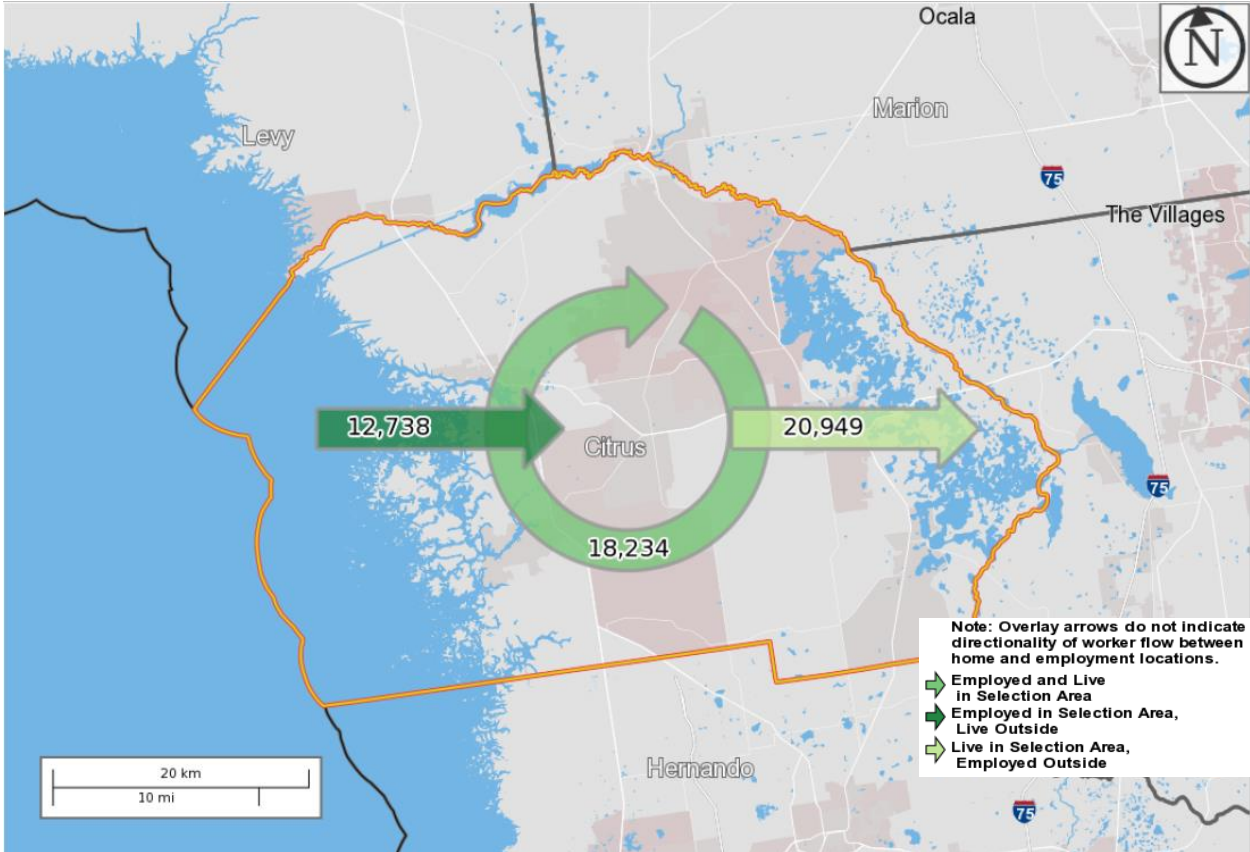
Home Area Profile Summary - Demographics

Jobs by Worker Race		
White Alone	36,250	92.5%
Black or African American Alone	1,686	4.3%
American Indian or Alaska Native Alone	157	0.4%
Asian Alone	675	1.7%
Native Hawaiian or Other Pacific Islander Alone	30	0.1%
Two or More Race Groups	385	1.0%
Jobs by Worker Ethnicity		
Not Hispanic or Latino	37,055	94.6%
Hispanic or Latino	2,128	5.4%
Jobs by Worker Educational Attainment		
Less than high school	3,774	9.6%
High school or equivalent, no college	9,569	24.4%
Some college or Associate degree	10,388	26.5%
Bachelor's degree or advanced degree	7,822	20.0%
Educational attainment not available (workers aged 29 or younger)	7,630	19.5%
Jobs by Worker Sex		
Male	18,891	48.2%
Female	20,292	51.8%

Source: U.S. Census Bureau, OnTheMap Application and Longitudinal Employer-Household Dynamics program.

Citrus County

Labor Inflow/Outflow Map



Source: U.S. Census Bureau, OnTheMap Application and Longitudinal Employer-Household Dynamics program.

Of the 30,972 people who are employed in Citrus County, 18,234 (58.9%) live and work in the county. There are 12,738 (41.1%) workers who live outside Citrus County and work within the county. Of the 39,183 workers who live within Citrus County, 20,949 (53.5%) residents work outside the county. There is a net outflow of -8,211 workers from Citrus County.

Citrus County

Labor Inflow/Outflow Summary

Selection Area Labor Market Size (Primary Jobs)	Count	Share
Employed in the Selection Area	30,972	100.0%
Living in the Selection Area	39,183	126.5%
Net Job Inflow (+) or Outflow (-)	-8,211	-
In-Area Labor Force Efficiency (Primary Jobs)		
Living in the Selection Area	39,183	100.0%
Living and Employed in the Selection Area	18,234	46.5%
Living in the Selection Area but Employed Outside	20,949	53.5%
In-Area Employment Efficiency (Primary Jobs)		
Employed in the Selection Area	30,972	100.0%
Employed and Living in the Selection Area	18,234	58.9%
Employed in the Selection Area but Living Outside	12,738	41.1%
Outflow Job Characteristics		
External Jobs Filled by Residents	20,949	100.0%
Workers Aged 29 or younger	4,619	22.0%
Workers Aged 30 to 54	10,640	50.8%
Workers Aged 55 or older	5,690	27.2%
Workers Earning \$1,250 per month or less	5,498	26.2%
Workers Earning \$1,251 to \$3,333 per month	8,937	42.7%
Workers Earning More than \$3,333 per month	6,514	31.1%
Workers in the "Goods Producing" Industry Class	3,091	14.8%
Workers in the "Trade, Transportation, and Utilities" Industry Class	6,170	29.5%
Workers in the "All Other Services" Industry Class	11,688	55.8%

Source: U.S. Census Bureau, OnTheMap Application and Longitudinal Employer-Household Dynamics program.

Citrus County

Labor Inflow/Outflow Summary (continued)

Inflow Job Characteristics (Primary Jobs)	Count	Share
Internal Jobs Filled by Outside Workers	12,738	100.0%
Workers Aged 29 or younger	2,997	23.5%
Workers Aged 30 to 54	6,698	52.6%
Workers Aged 55 or older	3,043	23.9%
Workers Earning \$1,250 per month or less	3,532	27.7%
Workers Earning \$1,251 to \$3,333 per month	5,463	42.9%
Workers Earning More than \$3,333 per month	3,743	29.4%
Workers in the "Goods Producing" Industry Class	1,468	11.5%
Workers in the "Trade, Transportation, and Utilities" Industry Class	4,365	34.3%
Workers in the "All Other Services" Industry Class	6,905	54.2%
Interior Flow Job Characteristics (Primary Jobs)		
Internal Jobs Filled by Residents	18,234	100.0%
Workers Aged 29 or younger	3,011	16.5%
Workers Aged 30 to 54	9,411	51.6%
Workers Aged 55 or older	5,812	31.9%
Workers Earning \$1,250 per month or less	4,580	25.1%
Workers Earning \$1,251 to \$3,333 per month	8,305	45.5%
Workers Earning More than \$3,333 per month	5,349	29.3%
Workers in the "Goods Producing" Industry Class	1,768	9.7%
Workers in the "Trade, Transportation, and Utilities" Industry Class	2,462	13.5%
Workers in the "All Other Services" Industry Class	14,004	76.8%

Source: U.S. Census Bureau, OnTheMap Application and Longitudinal Employer-Household Dynamics program.

Work Destination Summary

Where Workers are Employed Who Live in Citrus County

	Count	Share
Total Primary Jobs	39,183	100.0%
Job Counts by Counties Where Workers are Employed - Primary Jobs		
Citrus County, FL	18,234	46.5%
Marion County, FL	3,687	9.4%
Hernando County, FL	1,976	5.0%
Orange County, FL	1,628	4.2%
Hillsborough County, FL	1,580	4.0%
Lake County, FL	1,341	3.4%
Sumter County, FL	1,168	3.0%
Pasco County, FL	1,138	2.9%
Pinellas County, FL	1,042	2.7%
Duval County, FL	837	2.1%
Polk County, FL	719	1.8%
Seminole County, FL	540	1.4%
Alachua County, FL	518	1.3%
Volusia County, FL	450	1.1%
Levy County, FL	377	1.0%
Palm Beach County, FL	347	0.9%
Brevard County, FL	315	0.8%
Broward County, FL	246	0.6%
Manatee County, FL	239	0.6%
Osceola County, FL	239	0.6%
Sarasota County, FL	217	0.6%
Lee County, FL	215	0.5%
Columbia County, FL	206	0.5%
Leon County, FL	182	0.5%
Miami-Dade County, FL	166	0.4%
All Other Locations	1,576	4.0%

Source: U.S. Census Bureau, OnTheMap Application and Longitudinal Employer-Household Dynamics program.

Home Destination Summary

Where Workers Live Who are Employed in Citrus County

	Count	Share
Total Primary Jobs	30,972	100.0%
Job Counts by Counties Where Workers Live - Primary Jobs		
Citrus County, FL	18,234	58.9%
Marion County, FL	2,107	6.8%
Hernando County, FL	1,776	5.7%
Pasco County, FL	829	2.7%
Hillsborough County, FL	794	2.6%
Pinellas County, FL	696	2.2%
Orange County, FL	566	1.8%
Levy County, FL	471	1.5%
Sumter County, FL	470	1.5%
Lake County, FL	434	1.4%
Polk County, FL	410	1.3%
Alachua County, FL	394	1.3%
Duval County, FL	379	1.2%
Volusia County, FL	378	1.2%
Brevard County, FL	235	0.8%
Seminole County, FL	223	0.7%
Sarasota County, FL	137	0.4%
Osceola County, FL	136	0.4%
Flagler County, FL	121	0.4%
Suwannee County, FL	120	0.4%
Manatee County, FL	113	0.4%
Columbia County, FL	110	0.4%
Clay County, FL	109	0.4%
Leon County, FL	104	0.3%
Lee County, FL	102	0.3%
All Other Locations	1,524	4.9%

Source: U.S. Census Bureau, OnTheMap Application and Longitudinal Employer-Household Dynamics program.

**Florida Department of Economic Opportunity
Bureau of Labor Market Statistics**

**Caldwell Building
MSC G-020
107 E. Madison Street
Tallahassee, Florida 32399-4111
Phone (850) 245-7257**



www.floridajobs.org/labor-market-information