

Summary of Employment, Demographics, and Commuting Patterns for Levy County, Florida



**FLORIDA DEPARTMENT *of*
ECONOMIC OPPORTUNITY**

March 2018

Contents

Labor Shed Analysis 3

OnTheMap, Census Bureau..... 3

Florida Department of Economic Opportunity, Bureau of Labor Market Statistics (LMS) 3

Executive Summary 4

People QuickFacts..... 5

Business and Geography QuickFacts 7

Labor Force, Employment, and Unemployment 7

Population..... 7

Where Workers Work in Levy County 8

Work Area Profile Summary..... 9

Work Area Profile Summary - Demographics.....10

Where Workers Live in Levy County11

Home Area Profile Summary.....12

Home Area Profile Summary - Demographics.....13

Labor Inflow/Outflow Map14

Labor Inflow/Outflow Summary15

Work Destination Summary.....17

Home Destination Summary18

Labor Shed Analysis

A labor shed analysis is defined as where workers work and where workers live relative to a user-defined selection area. This analysis helps to determine where a labor market draws its commuting workers. Labor shed studies can draw comparisons between various geographies including state, Congressional District, Metropolitan Statistical Area (MSA), county, Workforce Investment Area (WIA), Zip Code, and Census tract. By indicating how many of the selection area workers work outside the area, labor sheds can help identify potential pools of workers who would be available for work in the user-defined area.

Labor shed studies provide economic developers and existing or prospective employers a tool to understand the local labor market and make informed expansion and site selection decisions. In addition, labor shed studies can help indicate potential impacts from environmental, social, or economic incidents.

OnTheMap, Census Bureau

OnTheMap is a mapping and reporting tool developed by the U.S. Census Bureau showing employment and home locations of workers with companion reports for user-defined areas. It is the first synthetic data product released by the Census Bureau. OnTheMap is an important tool for Florida to perform labor inflow/outflow analyses and provide commuting data to planning and economic development agencies as well as Regional Workforce Boards. OnTheMap data is also used by the Department of Economic Opportunity to help quantify natural disaster impacts for emergency management agencies based on where workers live and where they work.

OnTheMap integrates existing data from state-supplied administrative records on workers and employers with existing federal censuses, surveys, and other administrative records. The state Labor Market Information (LMI) agencies supply key data from unemployment wage records and from businesses each quarter. The Census Bureau merges the state-supplied data with current demographic information to produce the data found in OnTheMap. By combining data from different administrative sources, censuses, and surveys, the Census Bureau produces local employment information that was not previously available.

Florida Department of Economic Opportunity, Bureau of Labor Market Statistics (LMS)

The Florida Department of Economic Opportunity, Bureau of Labor Market Statistics, produces, analyzes, and distributes labor statistics to improve economic decision making. These data are produced as part of the federal/state cooperative statistical program with the U.S. Department of Labor, Bureau of Labor Statistics, and the Employment and Training Administration.

Executive Summary

The analysis of workforce and demographic characteristics, including commuting patterns of Levy County was conducted to provide economic data on the population and labor force living or working in the county. The report is useful for detailing where workers work and live in order to align resources. This report includes population, labor force, and demographics for Levy County.

Workers employed in Levy County are clustered in the Retail Trade (16.7%), and Educational Services (13.8%) industries. Workers living in Levy County are concentrated in the Health Care and Social Assistance (15.3%), and Retail Trade (13.4%) industries.

A detailed examination of commuting patterns for Levy County shows that the county has a net inflow of -4,916 workers. Using the latest annual Census data available, there were 7,858 workers employed in Levy County and 12,774 workers living in Levy County. Of the workers who lived in the county, 9,199 workers (72.0%) were employed outside the county.

With 72.0% of workers who reside in Levy County employed outside the county, Levy County had the 12th highest outflow rate among Florida counties. Glades County (85.3%) had the highest outflow rate, followed by Gilchrist County (79.7%), and Jefferson County (79.7%). Leon County (18.6%), Miami-Dade County (20.7%), and Duval County (23.2%) had the lowest worker outflow rates.

Of the 9,199 Levy County workers employed outside the county, the top destination counties are Alachua County (3,253 workers), Marion County (1,351 workers), and Duval County (474 workers). Of the 4,283 Levy County workers living outside the county, the top origin counties are Alachua County (703 workers), Marion County (672 workers), and Citrus County (377 workers).

Levy County

People QuickFacts

	Levy County	Florida	United States
Population			
Population estimates, July 1, 2017, (V2017)	NA	20,984,400	325,719,178
Population estimates, July 1, 2016	39,961	20,612,439	323,127,513
Population estimates base, April 1, 2010	40,801	18,804,592	308,758,105
Population estimates base, April 1, 2010, (V2017)	NA	18,804,594	308,758,105
Population, percent change - April 1, 2010 (estimates base) to July 1, 2017, (V2017)	NA	11.6%	5.5%
Population, percent change - April 1, 2010 (estimates base) to July 1, 2016	-2.1%	9.6%	4.7%
Population, Census, April 1, 2010	40,801	18,801,310	308,745,538
Age and Sex			
Persons under 5 years, percent, July 1, 2016	5.2%	5.5%	6.2%
Persons under 5 years, percent, April 1, 2010	5.6%	5.7%	6.5%
Persons under 18 years, percent, July 1, 2016	19.8%	20.1%	22.8%
Persons under 18 years, percent, April 1, 2010	21.1%	21.3%	24.0%
Persons 65 years and over, percent, July 1, 2016	23.8%	19.9%	15.2%
Persons 65 years and over, percent, April 1, 2010	19.4%	17.3%	13.0%
Female persons, percent, July 1, 2016	51.0%	51.1%	50.8%
Female persons, percent, April 1, 2010	50.8%	51.1%	50.8%
Race and Hispanic Origin			
White alone, percent, July 1, 2016(a)	87.4%	77.6%	76.9%
Black or African American alone, percent, July 1, 2016(a)	9.4%	16.8%	13.3%
American Indian and Alaska Native alone, percent, July 1, 2016(a)	0.7%	0.5%	1.3%
Asian alone, percent, July 1, 2016(a)	0.7%	2.9%	5.7%
Native Hawaiian and Other Pacific Islander alone, percent, July 1, 2016(a)	0.1%	0.1%	0.2%
Two or More Races, percent, July 1, 2016	1.7%	2.1%	2.6%
Hispanic or Latino, percent, July 1, 2016(b)	8.3%	24.9%	17.8%
White alone, not Hispanic or Latino, percent, July 1, 2016	80.1%	54.9%	61.3%
Population Characteristics			
Veterans, 2012-2016	4,442	1,480,133	19,535,341
Foreign born persons, percent, 2012-2016	3.5%	19.9%	13.2%
Legend			
The vintage year (e.g., V2016) refers to the final year of the series (2010 thru 2016). Different vintage years of estimates are not comparable.			
<i>Fact Notes</i>			
(a) Includes persons reporting only one race			
(b) Hispanics may be of any race, so also are included in applicable race categories			
"NA" Not available			

Source: U.S. Census Bureau, State & County QuickFacts.

Levy County

People QuickFacts (continued)

	Levy County	Florida	United States
Housing			
Housing units, July 1, 2016	19,773	9,301,642	135,697,926
Housing units, April 1, 2010	20,123	8,989,580	131,704,730
Owner-occupied housing unit rate, 2012-2016	75.1%	64.8%	63.6%
Median value of owner-occupied housing units, 2012-2016	\$86,700	\$166,800	\$184,700
Median selected monthly owner costs -with a mortgage, 2012-2016	\$979	\$1,422	\$1,491
Median selected monthly owner costs -without a mortgage, 2012-2016	\$302	\$466	\$462
Median gross rent, 2012-2016	\$651	\$1,032	\$949
Building permits, 2016	143	116,240	1,206,642
Families & Living Arrangements			
Households, 2012-2016	15,372	7,393,262	117,716,237
Persons per household, 2012-2016	2.55	2.64	2.64
Living in same house 1 year ago, percent of persons age 1 year+, 2012-2016	85.6%	83.9%	85.2%
Language other than English spoken at home, percent of persons age 5 years+, 2012-2016	6.9%	28.3%	21.1%
Education			
High school graduate or higher, percent of persons age 25 years+, 2012-2016	81.9%	87.2%	87.0%
Bachelor's degree or higher, percent of persons age 25 years+, 2012-2016	11.2%	27.9%	30.3%
Health			
With a disability, under age 65 years, percent, 2012-2016	14.9%	8.6%	8.6%
Persons without health insurance, under age 65 years, percent	17.4%	15.3%	10.1%
Economy			
In civilian labor force, total, percent of population age 16 years+, 2012-2016	49.0%	58.5%	63.1%
In civilian labor force, female, percent of population age 16 years+, 2012-2016	46.7%	54.3%	58.3%
Total accommodation and food services sales, 2012 (\$1,000)	28,812	49,817,925	708,138,598
Total health care and social assistance receipts/revenue, 2012 (\$1,000)	35,335	124,061,425	2,040,441,203
Total manufacturers shipments, 2012 (\$1,000)	D	96,924,106	5,696,729,632
Total merchant wholesaler sales, 2012 (\$1,000)	D	252,626,608	5,208,023,478
Total retail sales, 2012 (\$1,000)	360,765	273,867,145	4,219,821,871
Total retail sales per capita, 2012	\$9,013	\$14,177	\$13,443
Transportation			
Mean travel time to work (minutes), workers age 16 years+, 2012-2016	30.0	26.7	26.1
Income & Poverty			
Median household income (in 2016 dollars), 2012-2016	\$35,480	\$48,900	\$55,322
Per capita income in past 12 months (in 2016 dollars), 2012-2016	\$20,555	\$27,598	\$29,829
Persons in poverty, percent	21.4%	14.7%	12.7%
Legend			
"D" Suppressed to avoid disclosure of confidential information			

Source: U.S. Census Bureau, State & County QuickFacts.

Levy County

Business and Geography QuickFacts

	Levy County	Florida	United States
Business			
Total employer establishments, 2015	693	532,830	7,663,938
Total employment, 2015	5,547	7,777,990	124,085,947
Total annual payroll, 2015 (\$1,000)	161,216	337,074,525	6,253,488,252
Total employment, percent change, 2014-2015	6.7%	4.5%	2.5%
Total nonemployer establishments, 2015	2,775	2,040,33	24,331,403
All firms, 2012	2,883	2,100,18	27,626,360
Men-owned firms, 2012	1,425	1,084,88	14,844,597
Women-owned firms, 2012	1,092	807,817	9,878,397
Minority-owned firms, 2012	496	926,112	7,952,386
Nonminority-owned firms, 2012	2,291	1,121,749	18,987,918
Veteran-owned firms, 2012	320	185,756	2,521,682
Nonveteran-owned firms, 2012	2,401	1,846,686	24,070,685
Geography			
Population per square mile, 2010	36.5	350.6	87.4
Land area in square miles, 2010	1,118.21	53,624.76	3,531,905.43
FIPS Code	12075	12	00

Source: U.S. Census Bureau, State & County QuickFacts.

Labor Force, Employment, and Unemployment

	January 2018				January 2017			
	LABOR	EMPLOY-	UNEMPLOYMENT		LABOR	EMPLOY-	UNEMPLOYMENT	
	FORCE	MENT	LEVEL	RATE (%)	FORCE	MENT	LEVEL	RATE (%)
Workforce Region 10	197,054	186,837	10,217	5.2	197,000	184,941	12,059	6.1
Citrus County	47,378	44,530	2,848	6.0	47,105	43,800	3,305	7.0
Levy County	16,874	16,127	747	4.4	16,848	15,965	883	5.2
Marion County	132,802	126,180	6,622	5.0	133,047	125,176	7,871	5.9
Florida	10,136,000	9,719,000	417,000	4.1	9,961,000	9,483,000	479,000	4.8
United States	160,037,000	152,848,000	7,189,000	4.5	158,676,000	150,527,000	8,149,000	5.1

Source: U.S. Department of Labor, Bureau of Labor Statistics, Local Area Unemployment Statistics.

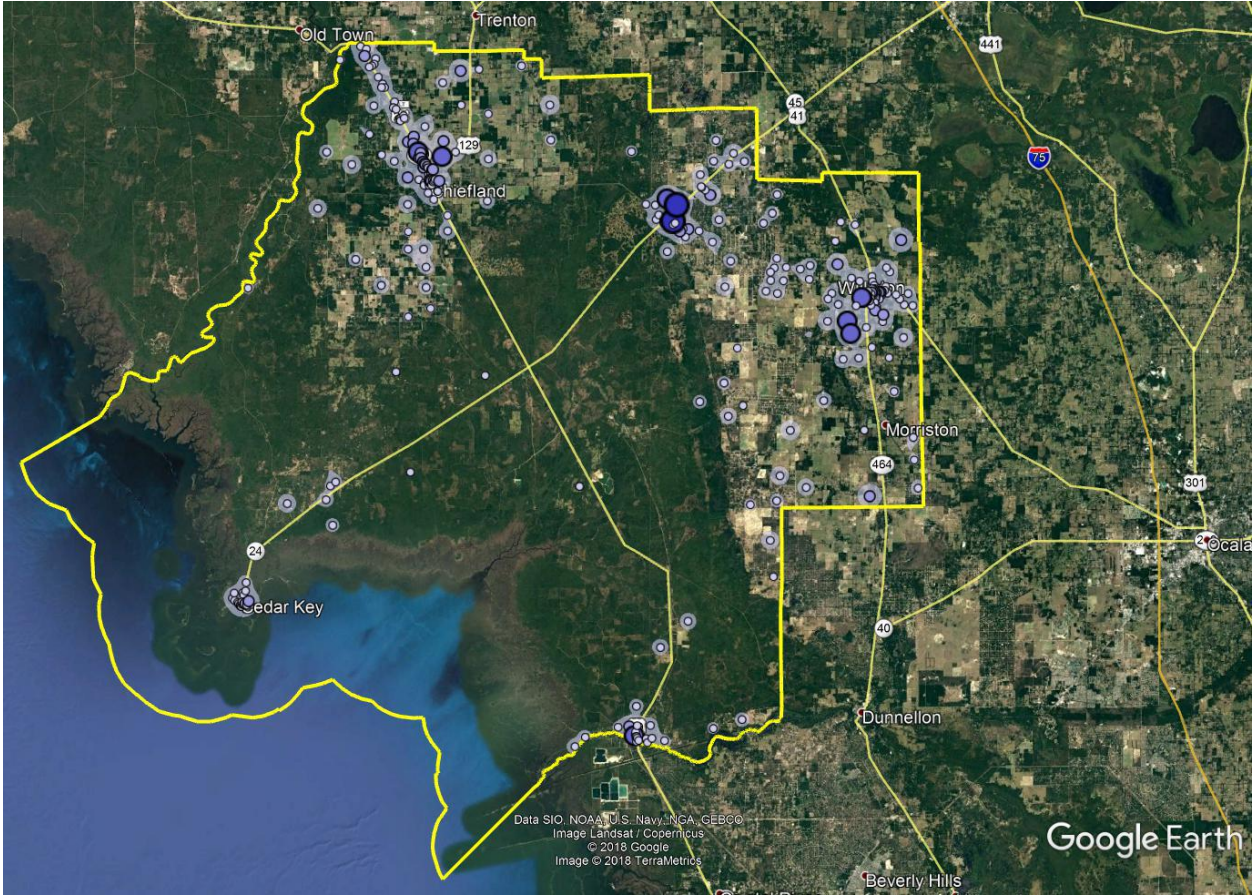
Population

	Population Estimate (as of July 1)						
	2010	2011	2012	2013	2014	2015	2016
Workforce Region 10	513,421	512,524	513,570	514,398	517,761	524,176	532,602
Citrus County	141,263	139,841	139,341	139,063	139,264	140,974	143,621
Levy County	40,721	40,254	39,935	39,535	39,418	39,688	39,961
Marion County	331,437	332,429	334,294	335,800	339,079	343,514	349,020
Florida	18,849,098	19,096,952	19,344,156	19,582,022	19,888,741	20,244,914	20,612,439
United States	309,348,193	311,663,358	313,998,379	316,204,908	318,563,456	320,896,618	323,127,513

Source: U.S. Census Bureau, Population Division.

Levy County

Where Workers Work in Levy County



Source: U.S. Census Bureau, OnTheMap Application and Longitudinal Employer-Household Dynamics program.

Map Legend

Job Density [Jobs/Sq. Mile]	Job Count [Jobs/Census Block]
■ 5 - 107	● 1 - 2
■ 108 - 414	● 3 - 27
■ 415 - 925	● 28 - 134
■ 926 - 1,642	● 135 - 423
■ 1,643 - 2,563	● 424 - 1,032

Levy County

Work Area Profile Summary

	Count	Share
Total Primary Jobs	7,858	100.0%
Jobs by Worker Age		
Age 29 or younger	1,548	19.7%
Age 30 to 54	4,264	54.3%
Age 55 or older	2,046	26.0%
Jobs by Earnings		
\$1,250 per month or less	1,916	24.4%
\$1,251 to \$3,333 per month	3,983	50.7%
More than \$3,333 per month	1,959	24.9%
Jobs by NAICS Industry Sector		
Agriculture, Forestry, Fishing and Hunting	493	6.3%
Mining, Quarrying, and Oil and Gas Extraction	22	0.3%
Utilities	60	0.8%
Construction	951	12.1%
Manufacturing	584	7.4%
Wholesale Trade	189	2.4%
Retail Trade	1,312	16.7%
Transportation and Warehousing	138	1.8%
Information	27	0.3%
Finance and Insurance	218	2.8%
Real Estate and Rental and Leasing	75	1.0%
Professional, Scientific, and Technical Services	174	2.2%
Management of Companies and Enterprises	41	0.5%
Administration & Support, Waste Management and Remediation	167	2.1%
Educational Services	1,081	13.8%
Health Care and Social Assistance	588	7.5%
Arts, Entertainment, and Recreation	80	1.0%
Accommodation and Food Services	586	7.5%
Other Services (excluding Public Administration)	131	1.7%
Public Administration	941	12.0%

Source: U.S. Census Bureau, OnTheMap Application and Longitudinal Employer-Household Dynamics program.

Levy County

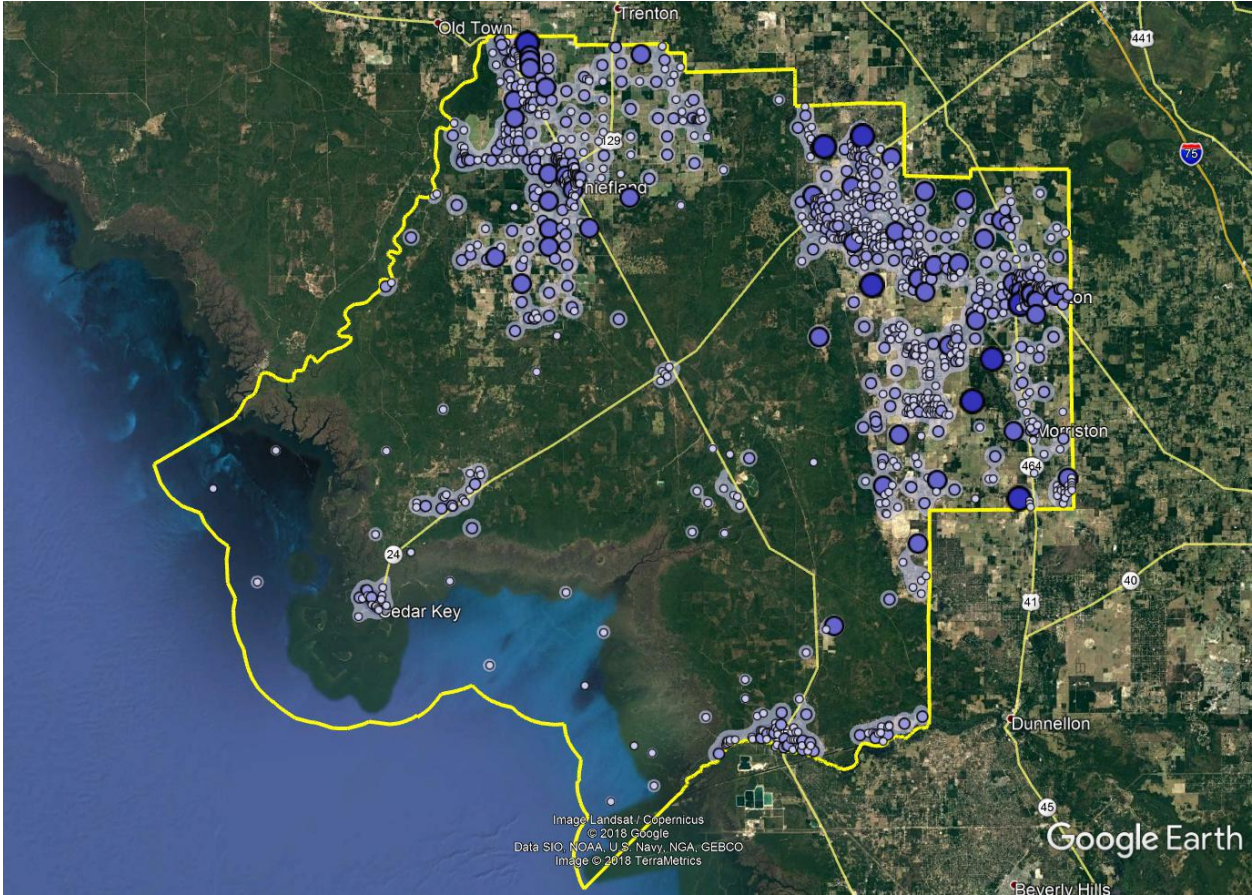
Work Area Profile Summary - Demographics

Jobs by Worker Race		
White Alone	6,844	87.1%
Black or African American Alone	805	10.2%
American Indian or Alaska Native Alone	36	0.5%
Asian Alone	93	1.2%
Native Hawaiian or Other Pacific Islander Alone	9	0.1%
Two or More Race Groups	71	0.9%
Jobs by Worker Ethnicity		
Not Hispanic or Latino	7,449	94.8%
Hispanic or Latino	409	5.2%
Jobs by Worker Educational Attainment		
Less than high school	889	11.3%
High school or equivalent, no college	2,138	27.2%
Some college or Associate degree	2,030	25.8%
Bachelor's degree or advanced degree	1,253	15.9%
Educational attainment not available (workers aged 29 or younger)	1,548	19.7%
Jobs by Worker Sex		
Male	4,047	51.5%
Female	3,811	48.5%

Source: U.S. Census Bureau, OnTheMap Application and Longitudinal Employer-Household Dynamics program.

Levy County

Where Workers Live in Levy County



Source: U.S. Census Bureau, OnTheMap Application and Longitudinal Employer-Household Dynamics program.

Map Legend

Job Density [Jobs/Sq. Mile]	Job Count [Jobs/Census Block]
■ 5 - 31	○ 1 - 2
■ 32 - 112	○ 3 - 10
■ 113 - 246	○ 11 - 34
■ 247 - 434	● 35 - 80
■ 435 - 676	● 81 - 157

Levy County

Home Area Profile Summary

	Count	Share
Total Primary Jobs	12,774	100.0%
Jobs by Worker Age		
Age 29 or younger	2,804	22.0%
Age 30 to 54	6,803	53.3%
Age 55 or older	3,167	24.8%
Jobs by Earnings		
\$1,250 per month or less	2,971	23.3%
\$1,251 to \$3,333 per month	6,173	48.3%
More than \$3,333 per month	3,630	28.4%
Jobs by NAICS Industry Sector		
Agriculture, Forestry, Fishing and Hunting	587	4.6%
Mining, Quarrying, and Oil and Gas Extraction	33	0.3%
Utilities	93	0.7%
Construction	927	7.3%
Manufacturing	745	5.8%
Wholesale Trade	398	3.1%
Retail Trade	1,715	13.4%
Transportation and Warehousing	388	3.0%
Information	116	0.9%
Finance and Insurance	310	2.4%
Real Estate and Rental and Leasing	156	1.2%
Professional, Scientific, and Technical Services	537	4.2%
Management of Companies and Enterprises	75	0.6%
Administration & Support, Waste Management and Remediation	549	4.3%
Educational Services	1,543	12.1%
Health Care and Social Assistance	1,952	15.3%
Arts, Entertainment, and Recreation	176	1.4%
Accommodation and Food Services	1,116	8.7%
Other Services (excluding Public Administration)	306	2.4%
Public Administration	1,052	8.2%

Source: U.S. Census Bureau, OnTheMap Application and Longitudinal Employer-Household Dynamics program.

Levy County

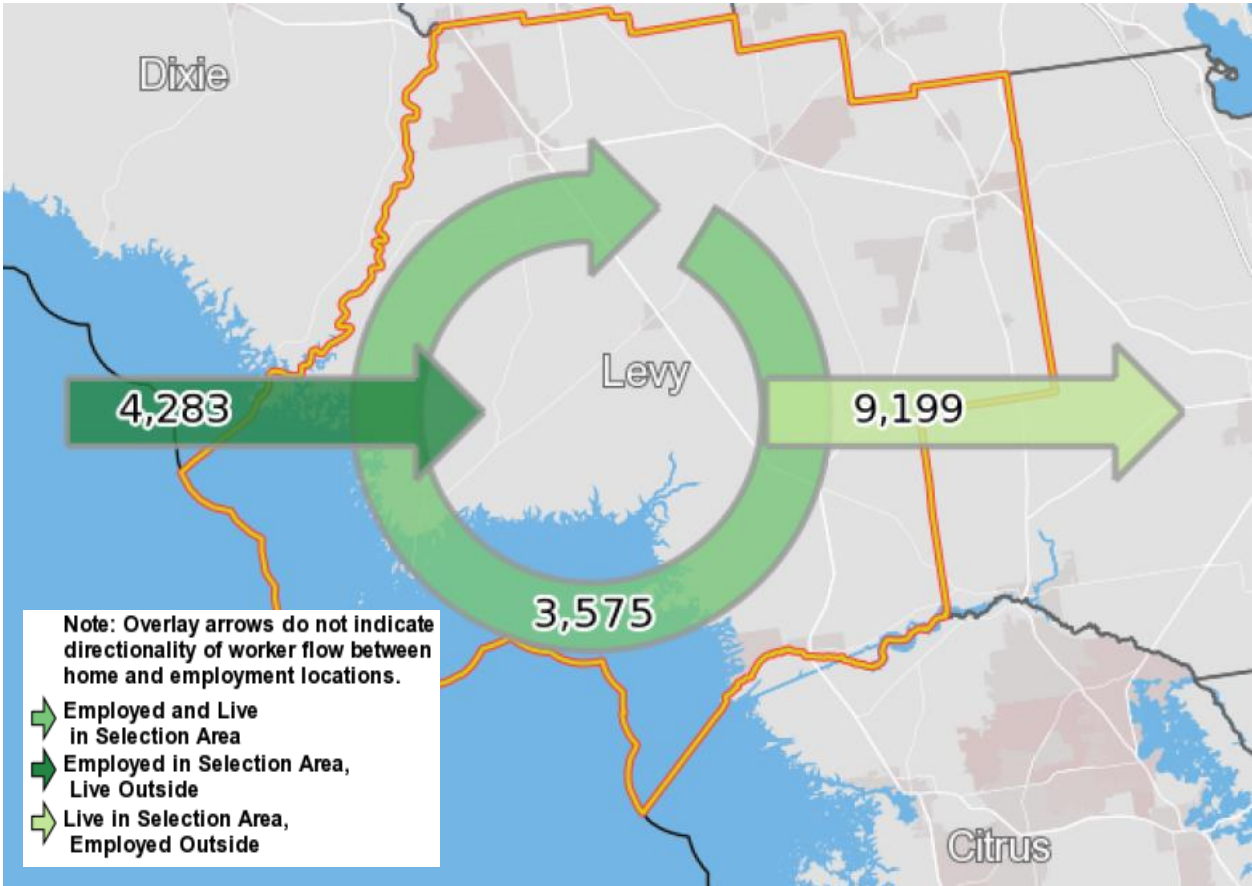
Home Area Profile Summary - Demographics

Jobs by Worker Race		
White Alone	11,022	86.3%
Black or African American Alone	1,417	11.1%
American Indian or Alaska Native Alone	67	0.5%
Asian Alone	142	1.1%
Native Hawaiian or Other Pacific Islander Alone	10	0.1%
Two or More Race Groups	116	0.9%
Jobs by Worker Ethnicity		
Not Hispanic or Latino	11,925	93.4%
Hispanic or Latino	849	6.6%
Jobs by Worker Educational Attainment		
Less than high school	1,311	10.3%
High school or equivalent, no college	3,198	25.0%
Some college or Associate degree	3,206	25.1%
Bachelor's degree or advanced degree	2,255	17.7%
Educational attainment not available (workers aged 29 or younger)	2,804	22.0%
Jobs by Worker Sex		
Male	6,356	49.8%
Female	6,418	50.2%

Source: U.S. Census Bureau, OnTheMap Application and Longitudinal Employer-Household Dynamics program.

Levy County

Labor Inflow/Outflow Map



Source: U.S. Census Bureau, OnTheMap Application and Longitudinal Employer-Household Dynamics program.

Of the 7,858 people who are employed in Levy County, 3,575 (45.5%) live and work in the county. There are 4,283 (54.5%) workers who live outside Levy County and work within the county. Of the 12,774 workers who live within Levy County, 9,199 (72.0%) residents work outside the county. There is a net inflow of -4,916 workers from Levy County.

Levy County

Labor Inflow/Outflow Summary

Selection Area Labor Market Size (Primary Jobs)	Count	Share
Employed in the Selection Area	7,858	100.0%
Living in the Selection Area	12,774	162.6%
Net Job Inflow (+) or Outflow (-)	-4,916	-
In-Area Labor Force Efficiency (Primary Jobs)		
Living in the Selection Area	12,774	100.0%
Living and Employed in the Selection Area	3,575	28.0%
Living in the Selection Area but Employed Outside	9,199	72.0%
In-Area Employment Efficiency (Primary Jobs)		
Employed in the Selection Area	7,858	100.0%
Employed and Living in the Selection Area	3,575	45.5%
Employed in the Selection Area but Living Outside	4,283	54.5%
Outflow Job Characteristics		
External Jobs Filled by Residents	9,199	100.0%
Workers Aged 29 or younger	2,205	24.0%
Workers Aged 30 to 54	4,825	52.5%
Workers Aged 55 or older	2,169	23.6%
Workers Earning \$1,250 per month or less	2,119	23.0%
Workers Earning \$1,251 to \$3,333 per month	4,224	45.9%
Workers Earning More than \$3,333 per month	2,856	31.0%
Workers in the "Goods Producing" Industry Class	1,518	16.5%
Workers in the "Trade, Transportation, and Utilities" Industry Class	2,024	22.0%
Workers in the "All Other Services" Industry Class	5,657	61.5%

Source: U.S. Census Bureau, OnTheMap Application and Longitudinal Employer-Household Dynamics program.

Levy County

Labor Inflow/Outflow Summary (continued)

Inflow Job Characteristics (Primary Jobs)	Count	Share
Internal Jobs Filled by Outside Workers	4,283	100.0%
Workers Aged 29 or younger	949	22.2%
Workers Aged 30 to 54	2,286	53.4%
Workers Aged 55 or older	1,048	24.5%
Workers Earning \$1,250 per month or less	1,064	24.8%
Workers Earning \$1,251 to \$3,333 per month	2,034	47.5%
Workers Earning More than \$3,333 per month	1,185	27.7%
Workers in the "Goods Producing" Industry Class	1,276	29.8%
Workers in the "Trade, Transportation, and Utilities" Industry Class	1,129	26.4%
Workers in the "All Other Services" Industry Class	1,878	43.8%
Interior Flow Job Characteristics (Primary Jobs)		
Internal Jobs Filled by Residents	3,575	100.0%
Workers Aged 29 or younger	599	16.8%
Workers Aged 30 to 54	1,978	55.3%
Workers Aged 55 or older	998	27.9%
Workers Earning \$1,250 per month or less	852	23.8%
Workers Earning \$1,251 to \$3,333 per month	1,949	54.5%
Workers Earning More than \$3,333 per month	774	21.7%
Workers in the "Goods Producing" Industry Class	774	21.7%
Workers in the "Trade, Transportation, and Utilities" Industry Class	570	15.9%
Workers in the "All Other Services" Industry Class	2,231	62.4%

Source: U.S. Census Bureau, OnTheMap Application and Longitudinal Employer-Household Dynamics program.

Work Destination Summary

Where Workers are Employed Who Live in Levy County

	Count	Share
Total Primary Jobs	12,774	100.0%
Job Counts by Counties Where Workers are Employed - Primary Jobs		
Levy County, FL	3,575	28.0%
Alachua County, FL	3,253	25.5%
Marion County, FL	1,351	10.6%
Duval County, FL	474	3.7%
Citrus County, FL	471	3.7%
Gilchrist County, FL	471	3.7%
Orange County, FL	269	2.1%
Hillsborough County, FL	268	2.1%
Columbia County, FL	225	1.8%
Leon County, FL	151	1.2%
Pinellas County, FL	146	1.1%
Dixie County, FL	131	1.0%
Clay County, FL	114	0.9%
Volusia County, FL	107	0.8%
Polk County, FL	98	0.8%
Seminole County, FL	92	0.7%
Lake County, FL	83	0.6%
Pasco County, FL	80	0.6%
Sumter County, FL	80	0.6%
St. Johns County, FL	70	0.5%
Taylor County, FL	70	0.5%
Hernando County, FL	65	0.5%
Palm Beach County, FL	59	0.5%
Suwannee County, FL	57	0.4%
Putnam County, FL	54	0.4%
All Other Locations	960	7.5%

Source: U.S. Census Bureau, OnTheMap Application and Longitudinal Employer-Household Dynamics program.

Home Destination Summary

Where Workers Live Who are Employed in Levy County

	Count	Share
Total Primary Jobs	7,858	100.0%
Job Counts by Counties Where Workers Live - Primary Jobs		
Levy County, FL	3,575	45.5%
Alachua County, FL	703	8.9%
Marion County, FL	672	8.6%
Citrus County, FL	377	4.8%
Gilchrist County, FL	357	4.5%
Dixie County, FL	325	4.1%
Hernando County, FL	166	2.1%
Pasco County, FL	118	1.5%
Duval County, FL	116	1.5%
Hillsborough County, FL	100	1.3%
Pinellas County, FL	98	1.2%
Volusia County, FL	84	1.1%
Lake County, FL	82	1.0%
Sumter County, FL	79	1.0%
Columbia County, FL	74	0.9%
Suwannee County, FL	71	0.9%
Leon County, FL	64	0.8%
Orange County, FL	64	0.8%
Polk County, FL	58	0.7%
Bradford County, FL	36	0.5%
Brevard County, FL	36	0.5%
Seminole County, FL	34	0.4%
St. Johns County, FL	33	0.4%
Clay County, FL	29	0.4%
Escambia County, FL	28	0.4%
All Other Locations	479	6.1%

Source: U.S. Census Bureau, OnTheMap Application and Longitudinal Employer-Household Dynamics program.

**Florida Department of Economic Opportunity
Bureau of Labor Market Statistics**

**Caldwell Building
MSC G-020
107 E. Madison Street
Tallahassee, Florida 32399-4111
Phone (850) 245-7257**



www.floridajobs.org/labor-market-information