



**CareerSource Citrus Levy Marion**  
**2703 NE 14<sup>th</sup> Street**  
**Ocala, FL 34470**

**EDUCATION AND INDUSTRY CONSORTIUM AGENDA**

**Thursday, May 14, 2026 – 9:00 a.m.**

**Join Zoom Meeting:** <https://us02web.zoom.us/j/87844603224>  
**Phone No: 1-646-558-8656 (EST) Meeting ID: 878 4460 3224**

Call to Order	J. Corley
Roll Call	C. Schnettler
Approval of Minutes – February 12, 2026	Pages 2 - 4 J. Corley
<b><u>PRESENTATION</u></b>	
Workforce Pell Grants	Pages 5 - 8 Dr. J. Fryns
<b><u>DISCUSSION ITEMS</u></b>	
None	
<b><u>PUBLIC COMMENT</u></b>	
	J. Corley
<b><u>ACTION ITEMS</u></b>	
None	
<b><u>MATTERS FROM THE FLOOR</u></b>	
	J. Corley
<b><u>ADJOURNMENT</u></b>	

2025 – 2026 MEETING SCHEDULE							
Performance/ Monitoring	Business and Economic Development	Career Center	Marketing / Outreach	Education and Industry Consortium	Executive	Full Board	
Unless noted otherwise all committee meetings are held at CareerSource CLM, 2703 NE 14 <sup>th</sup> Street, Ocala, FL 34470							
Tuesday 9:00 am	Wednesday 9:00 am	Thursday 9:30 am	Wednesday 9:00 am	Thursday 9:00 am	Wednesday 9:30 am	Wednesday, 11:30 am	
8/5/2025	8/6/2025	8/7/2025	8/13/2025	8/14/2025	8/27/2025	9/3/2025	CF Levy
11/4/2025	11/5/2025	10/30/2025	11/12/2025	11/13/2025	11/19/2025	12/10/2025	CF Ocala
					1/30/2026		
2/3/2026	2/4/2026	2/5/2026	2/11/2026	2/12/2026	2/25/2026	3/4/2026	CF Lecanto
5/5/2026	5/6/2026	5/7/2026	5/13/2026	5/14/2026	5/27/2026	6/10/2026	CF Ocala

**OUR VISION STATEMENT**

*To be known as the number one workforce resource in the state of Florida by providing constructive tools and professional supportive services that are reflected in the quality of our job candidates and meet the needs of the business community.*



**CAREERSOURCE CITRUS LEVY MARION  
Education and Industry Consortium**

**MINUTES**

DATE: February 12, 2026  
PLACE: CareerSource CLM  
2703 NE 14<sup>th</sup> Street, Ocala, FL 34470  
TIME: 9:00 a.m.

**MEMBERS PRESENT**

Ashley Shorb  
Dr. Jennifer Fryns  
Joe Corley  
Katherine Otte  
Marci Holder

**MEMBERS ABSENT**

Bob Rutenmiller  
Rebecca Johnson  
Tanya Taylor

**Other Attendees**

Rusty Skinner, CSCLM  
Dale French, CSCLM  
Cory Weaver, CSCLM  
Melissa Saco, CSCLM

Cira Schnettler, CSCLM  
Tony Waterson, One Stop Operator  
Kristen Barry, One Stop Operator  
Calvin Cooksey, FleetForce

**CALL TO ORDER**

The meeting was called to order by Joe Corley, Chair, at 9:01 a.m.

**ROLL CALL**

Cira Schnettler called roll and a quorum was declared present.

**APPROVAL OF MINUTES**

Ashley Shorb made a motion to approve the minutes from the November 13, 2025, minutes. Katherine Otte seconded the motion. Motion carried.

**PRESENTATION**

Cory Weaver gave an overview of the presentation. She reviewed the committee's purpose and answered questions on how the committee plans to fulfill the purpose.

The committee will meet its objectives through discussion and presentations:

- Talent needs of local industry targeted sectors will be identified.
- Educational partners will present courses and certifications currently available as

well as promote upcoming programs and projects in development.

- CareerSource CLM will review training programs offered through business services.

### **Prior Meeting Insights**

Cory Weaver reviewed a summary of previous discussions by the committee, which included action steps discussed at the previous meeting.

- Goals and strategies to meet the goals.
- Expand the membership.
- Identify curriculums and local training providers to align with business needs.
- Create industry subcommittees.

### **Industry Snapshot, Top 25 Occupations, and Talent Supply**

The committee provided the feedback below on the report:

- Healthcare, construction, and the professional industries are trending with higher demand in the 5-year forecast, in contrast to manufacturing, transportation, and logistics trending stagnant or down.
- Marci Holder shared that respiratory and speech therapists are high demand occupations.
- We are seeing a shift of increased job applicant traffic.

### **Educational Awards, Skills Gap**

- Cory Weaver reviewed the list of certificates available through local educational partners.
- Many high school students are not skilled in Microsoft products like Excel. Dr. Fryns shared that computer competency is now a requirement at CF. Excel is the number one requested training at the corporate college.
- The group discussed concerns regarding gaps in safety awareness among young adults.
- The group discussed the challenges of hiring individuals who do not demonstrate the skill level they represented on their resumes, contributing to early turnover

### **NEXT STEPS**

The committee discussed actionable items for next steps:

- Review Master Credential List annually.
- Validate that current local training offerings align with industry needs.
- Explore new training options not currently offered in our area to meet skills gaps.

### **DISCUSSION ITEMS**

#### **Workforce Pell Grants, Subcommittees, Private Sector Member Recruitment**

Rusty Skinner summarized the Workforce Pell Act. The Act provides a structure to fund short term certificate training options. This will be used to target students that do not have a career path and set a future for a better talent pipeline.

Calvin Corsey stated that this program will align with the short-term certificate options at FleetForce.

Joe Corley stated he has been approaching members of other associations he belongs to and encouraging them to join one of the subcommittees of this Consortium.

**PUBLIC COMMENT**

None

**MATTERS FROM THE FLOOR**

None

**ADJOURNMENT**

There being no further business, the meeting adjourned at 9:57 a.m.

**APPROVED:**

---



# Workforce Pell – New Policy Highlights



## **New Pell category for short-term workforce programs**

Expands Pell Grant eligibility to shorter, non-degree workforce training programs that prepare students for high-skill, high-wage, or in-demand jobs.



## **Program-level approval required by ED**

Each program must receive individual ED approval, informed by state-reported completion and job placement data.



## **Students with bachelor's degrees are eligible**

Students with a bachelor's degree may receive Workforce Pell, expanding access for reskilling and career transitions.



# Workforce Pell – New Policy Highlights

## No student can receive Dual Pell in the Same Payment Period

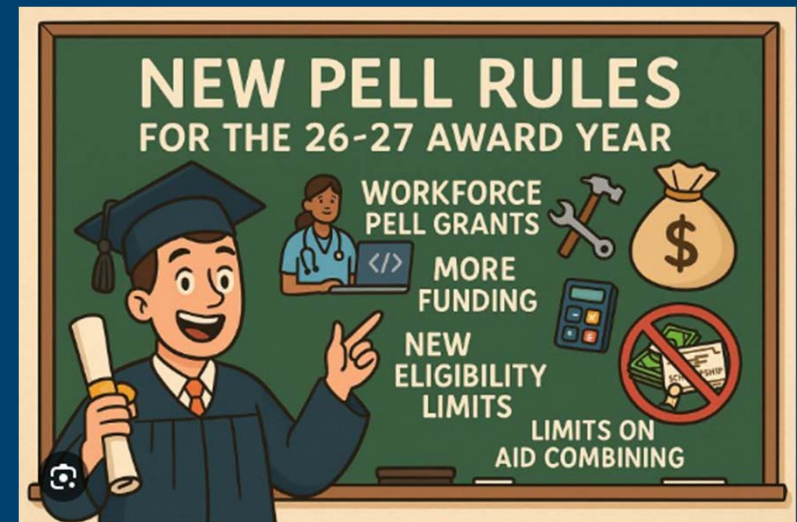
Awards are prorated based on program length. Students cannot receive a Workforce Pell and regular Pell concurrently..

## Programs must meet 70% completion / 70% job placement thresholds

Programs must demonstrate a 70% completion rate and a 70% job placement rate within 180 days of completion.

## Tuition must not exceed Value-Added Earnings (VAE) over time

Programs must prove that tuition costs do not exceed the earnings gains graduates realize within three years.



The Student Aid Index (SAI) Of approximately \$17,000 ensures the grant aid students with the most financial need.



# Workforce Pell - Program Eligibility Framework



## Length & format

150-599 clock hours, typically completed in 8 to fewer than 15 weeks or

4 to fewer than 16 semester credits (or 6 to fewer than 24 quarter hour credits)

Programs may not be offered as correspondence education, study abroad, or direct assessment programs.



## Two-level approval

States serve as the primary gatekeepers for Workforce Pell eligibility, approving programs based on labor-market alignment, employer demand, stackable credential pathways, and robust data-sharing requirements.

Approved programs from the state must undergo federal review by the U.S. Department of Education.



## Provider rules

Max 25% of program at a non–Title IV partner (No more than 25% of program delivery can come from a non–Title IV partner.)



## Program History

Must have been in operation for at least one year before seeking Workforce Pell eligibility (draft regulations count this from the time of state approval).



## Workforce Pell – Core Metrics

- **Completion Rate:** Programs must demonstrate at least a **70% completion rate** (students finish the program within an expected timeframe).
- **Job Placement:** At least **70% of graduates** must be placed in jobs within **180 days** after completion (placement may eventually be tied specifically to jobs in the field of study).
- **Earnings Test:** Programs must demonstrate that the **median earnings of completers exceed the cost of tuition and fees plus a baseline income threshold** (such as 150% of the federal poverty level) — this is often referred to as a “value-added earnings” requirement.

Draft regulations specify how these metrics are calculated, how data are reported, and how institutions demonstrate compliance.