

Summary of Employment, Demographics, and Commuting Patterns for Levy County, Florida



May 2021

Contents

Labor Shed Analysis3

OnTheMap, Census Bureau3

Florida Department of Economic Opportunity, Bureau of Workforce Statistics and Economic Research (WSER)3

Executive Summary4

People QuickFacts.....5

Business and Geography QuickFacts.....7

Labor Force, Employment, and Unemployment7

Population7

Where Workers Work in Levy County8

Work Area Profile Summary9

Work Area Profile Summary - Demographics 10

Where Workers Live in Levy County..... 11

Home Area Profile Summary 12

Home Area Profile Summary - Demographics..... 13

Labor Inflow/Outflow Map 14

Labor Inflow/Outflow Summary..... 15

Work Destination Summary 17

Home Destination Summary 18

Labor Shed Analysis

A labor shed analysis is defined as where workers work and where workers live relative to a user-defined selection area. This analysis helps to determine where a labor market draws its commuting workers. Labor shed studies can draw comparisons between various geographies including state, Congressional District, Metropolitan Statistical Area (MSA), county, Workforce Investment Area (WIA), Zip Code, and Census tract. By indicating how many of the selection area workers work outside the area, labor sheds can help identify potential pools of workers who would be available for work in the user-defined area.

Labor shed studies provide economic developers and existing or prospective employers a tool to understand the local labor market and make informed expansion and site selection decisions. In addition, labor shed studies can help indicate potential impacts from environmental, social, or economic incidents.

OnTheMap, Census Bureau

OnTheMap is a mapping and reporting tool developed by the U.S. Census Bureau showing employment and home locations of workers with companion reports for user-defined areas. It is the first synthetic data product released by the Census Bureau. OnTheMap is an important tool for Florida to perform labor inflow/outflow analyses and provide commuting data to planning and economic development agencies as well as Regional Workforce Boards. OnTheMap data is also used by the Department of Economic Opportunity to help quantify natural disaster impacts for emergency management agencies based on where workers live and where they work.

OnTheMap integrates existing data from state-supplied administrative records on workers and employers with existing federal censuses, surveys, and other administrative records. The state Labor Market Information (LMI) agencies supply key data from unemployment wage records and from businesses each quarter. The Census Bureau merges the state-supplied data with current demographic information to produce the data found in OnTheMap. By combining data from different administrative sources, censuses, and surveys, the Census Bureau produces local employment information that was not previously available.

Florida Department of Economic Opportunity, Bureau of Workforce Statistics and Economic Research (WSER)

The Florida Department of Economic Opportunity, Bureau of Workforce Statistics and Economic Research (WSER), produces, analyzes, and distributes labor statistics to improve economic decision making. These data are produced as part of the federal/state cooperative statistical program with the U.S. Department of Labor, Bureau of Labor Statistics, and the Employment and Training Administration.

Executive Summary

The analysis of workforce and demographic characteristics, including commuting patterns of Levy County was conducted to provide economic data on the population and labor force living or working in the county. The report is useful for detailing where workers work and live in order to align resources. This report includes population, labor force, and demographics for Levy County.

Workers employed in Levy County are clustered in the Retail Trade (15.8%) and Construction (13.2%) industries. Workers living in Levy County are concentrated in the Health Care and Social Assistance (15.3%) and Retail Trade (12.9%) industries.

A detailed examination of commuting patterns for Levy County shows that the county has a net outflow of -5,199 workers. Using the latest annual Census data available, there were 8,720 workers employed in Levy County and 13,919 workers living in Levy County. Of the workers who lived in the county, 10,068 workers (72.3%) were employed outside the county.

With 72.3% of workers who reside in Levy County employed outside the county, Levy County was ranked 12th of 67 for the highest outflow rankings among Florida counties. Leon (20.9%) had the lowest outflow rate, followed by Miami-Dade (22.0%) and Duval (25.5%). Glades (85.1%), Jefferson (82.2%), and Union (79.6%) had the highest worker outflow rates.

Of the 10,068 Levy County workers employed outside the county, the top destination counties are Alachua County (3,523 workers), Marion County (1,355 workers), and Duval County (516 workers). Of the 4,869 Levy County workers living outside the county, the top origin counties are Alachua County (782 workers), Marion County (770 workers), and Citrus County (421 workers).

People QuickFacts

	Levy County	Florida	United States
Population			
Population estimates, July 1, 2019, (V2019)	41,503	21,477,737	328,239,523
Population estimates base, April 1, 2010, (V2019)	40,798	18,804,564	308,758,105
Population, percent change - April 1, 2010 (estimates base) to July 1, 2019, (V2019)	1.7%	14.2%	6.3%
Population, Census, April 1, 2010	40,801	18,801,310	308,745,538
Population, Census, April 1, 2020	X	21,538,187	331,449,281
Age and Sex			
Persons under 5 years, percent	5.1%	5.3%	6.0%
Persons under 18 years, percent	19.4%	19.7%	22.3%
Persons 65 years and over, percent	25.1%	20.9%	16.5%
Female persons, percent	51.1%	51.1%	50.8%
Race and Hispanic Origin			
White alone, percent	87.0%	77.3%	76.3%
Black or African American alone, percent(a)	9.3%	16.9%	13.4%
American Indian and Alaska Native alone, percent(a)	0.7%	0.5%	1.3%
Asian alone, percent(a)	0.9%	3.0%	5.9%
Native Hawaiian and Other Pacific Islander alone, percent(a)	0.1%	0.1%	0.2%
Two or More Races, percent	2.0%	2.2%	2.8%
Hispanic or Latino, percent(b)	8.8%	26.4%	18.5%
White alone, not Hispanic or Latino, percent	79.2%	53.2%	60.1%
Population Characteristics			
Veterans, 2015-2019	4,666	1,440,338	18,230,322
Foreign born persons, percent, 2015-2019	4.3%	20.7%	13.6%
Housing			
Housing units, July 1, 2019, (V2019)	20,942	9,673,682	139,684,244
Owner-occupied housing unit rate, 2015-2019	77.7%	65.4%	64.0%
Median value of owner-occupied housing units, 2015-2019	\$105,700	\$215,300	\$217,500
Median selected monthly owner costs -with a mortgage, 2015-2019	\$983	\$1,503	\$1,595
Median selected monthly owner costs -without a mortgage, 2015-2019	\$300	\$505	\$500
Median gross rent, 2015-2019	\$720	\$1,175	\$1,062
Building permits, 2020	230	164,074	1,471,141

Legend

The vintage year (e.g., V2019) refers to the final year of the series (2010 thru 2019). Different vintage years of estimates are not comparable.

Fact Notes

(a) Includes persons reporting only one race

(b) Hispanics may be of any race, so also are included in applicable race categories

Source: U.S. Census Bureau, State & County QuickFacts.

People QuickFacts (continued)

	Levy County	Florida	United States
Families & Living Arrangements			
Households, 2015-2019	16,374	7,736,311	120,756,048
Persons per household, 2015-2019	2.44	2.65	2.62
Living in same house 1 year ago, percent of persons age 1 year+, 2015-2019	87.2%	84.5%	85.8%
Language other than English spoken at home, percent of persons age 5 years+, 2015-2019	7.2%	29.4%	21.6%
Computer and Internet Use			
Households with a computer, percent, 2015-2019	84.4%	91.5%	90.3%
Households with a broadband Internet subscription, percent, 2015-2019	67.2%	83.0%	82.7%
Education			
High school graduate or higher, percent of persons age 25 years+, 2015-2019	84.9%	88.2%	88.0%
Bachelor's degree or higher, percent of persons age 25 years+, 2015-2019	12.2%	29.9%	32.1%
Health			
With a disability, under age 65 years, percent, 2015-2019	15.1%	8.6%	8.6%
Persons without health insurance, under age 65 years, percent	18.1%	16.3%	9.5%
Economy			
In civilian labor force, total, percent of population age 16 years+, 2015-2019	49.5%	58.5%	63.0%
In civilian labor force, female, percent of population age 16 years+, 2015-2019	47.3%	54.3%	58.3%
Total accommodation and food services sales, 2012 (\$1,000)(c)	28,812	49,817,925	708,138,598
Total health care and social assistance receipts/revenue, 2012 (\$1,000)(c)	35,335	124,061,425	2,040,441,203
Total manufacturers shipments, 2012 (\$1,000)(c)	D	96,924,106	5,696,729,632
Total merchant wholesaler sales, 2012 (\$1,000)(c)	D	252,626,608	5,208,023,478
Total retail sales, 2012 (\$1,000)(c)	360,765	273,867,145	4,219,821,871
Total retail sales per capita, 2012(c)	\$9,013	\$14,177	\$13,443
Transportation			
Mean travel time to work (minutes), workers age 16 years+, 2015-2019	29.9	27.8	26.9
Income & Poverty			
Median household income (in 2019 dollars), 2015-2019	\$37,326	\$55,660	\$62,843
Per capita income in past 12 months (in 2019 dollars), 2015-2019	\$21,579	\$31,619	\$34,103
Persons in poverty, percent	18.2%	12.7%	10.5%

Legend

The vintage year (e.g., V2019) refers to the final year of the series (2010 thru 2019). Different vintage years of estimates are not comparable.

Fact Notes

(c) Economic Census - Puerto Rico data are not comparable to U.S. Economic Census data

Value Flags

"D" Suppressed to avoid disclosure of confidential information

Source: U.S. Census Bureau, State & County QuickFacts.

Business and Geography QuickFacts

	Levy County	Florida	United States
Businesses			
Total employer establishments, 2019	762	574,51	7,959,103
Total employment, 2019	6,162	8,860,04	132,989,428
Total annual payroll, 2019 (\$1,000)	198,570	426,908,31	7,428,553,593
Total employment, percent change, 2018-2019	-3.8%	2.2%	1.6%
Total nonemployer establishments, 2018	2,959	2,388,050	26,485,532
All firms, 2012	2,883	2,100,187	27,626,360
Men-owned firms, 2012	1,425	1,084,885	14,844,597
Women-owned firms, 2012	1,092	807,817	9,878,397
Minority-owned firms, 2012	496	926,112	7,952,386
Nonminority-owned firms, 2012	2,291	1,121,749	18,987,918
Veteran-owned firms, 2012	320	185,756	2,521,682
Nonveteran-owned firms, 2012	2,401	1,846,686	24,070,685
Geography			
Population per square mile, 2010	36.5	350.6	87.4
Land area in square miles, 2010	1,118.21	53,624.76	3,531,905.43
FIPS Code	12075	12	1

Source: U.S. Census Bureau, State & County QuickFacts.

Labor Force, Employment, and Unemployment

	April 2021				April 2020			
	LABOR	EMPLOY-	UNEMPLOYMENT		LABOR	EMPLOY-	UNEMPLOYMENT	
	FORCE	MENT	LEVEL	RATE (%)	FORCE	MENT	LEVEL	RATE (%)
Workforce Region 10	210,741	199,045	11,696	5.5	193,666	168,309	25,357	13.1
Citrus County	48,749	45,731	3,018	6.2	44,820	37,888	6,932	15.5
Levy County	17,424	16,576	848	4.9	15,853	14,142	1,711	10.8
Marion County	144,568	136,738	7,830	5.4	132,993	116,279	16,714	12.6
Florida	10,357,000	9,825,000	532,000	5.1	9,718,000	8,369,000	1,349,000	13.9
United States	160,379,000	151,160,000	9,220,000	5.7	155,830,000	133,326,000	22,504,000	14.4

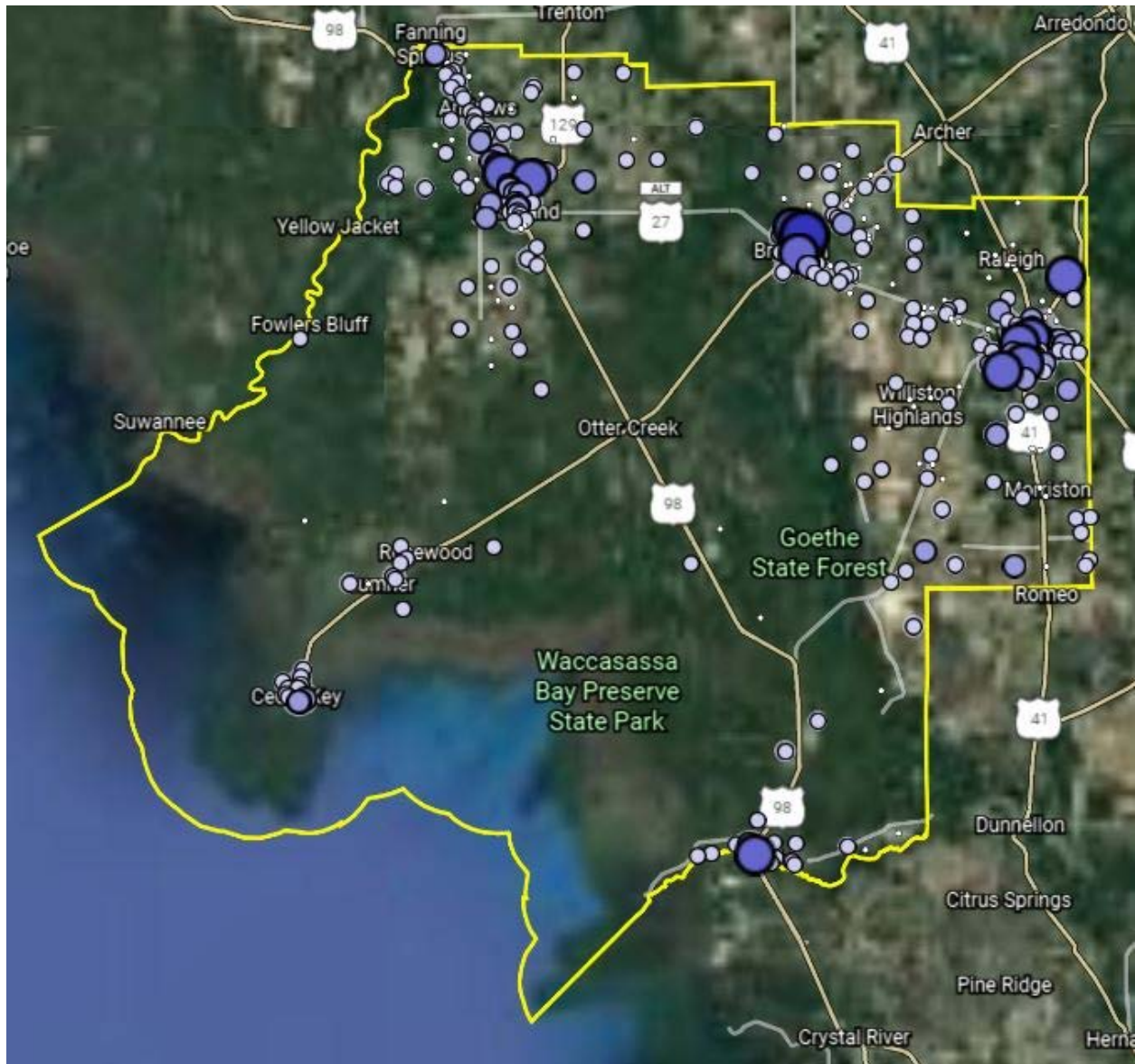
Source: U.S. Department of Labor, Bureau of Labor Statistics, Local Area Unemployment Statistics.

Population

	Population Estimate (as of July 1)							
	2012	2013	2014	2015	2016	2017	2018	2019
Workforce Region 10	512,876	513,345	516,129	522,070	530,110	539,030	547,542	556,739
Citrus County	139,180	138,829	138,828	140,287	142,804	145,415	147,682	149,657
Levy County	39,823	39,433	39,296	39,601	39,837	40,276	40,798	41,503
Marion County	333,873	335,083	338,005	342,182	347,469	353,339	359,062	365,579
Florida	19,297,822	19,545,621	19,845,911	20,209,042	20,613,477	20,963,613	21,244,317	21,477,737
United States	313,830,990	315,993,715	318,301,008	320,635,163	322,941,311	324,985,539	326,687,501	328,239,523

Source: U.S. Census Bureau, Population Division.

Where Workers Work in Levy County



Source: U.S. Census Bureau, OnTheMap Application and Longitudinal Employer-Household Dynamics program.

Map Legend

Job Density [Jobs/Sq. Mile]

- 5 - 102
- 103 - 393
- 394 - 879
- 880 - 1,559
- 1,560 - 2,434

Job Count [Jobs/Census Block]

- 1 - 2
- 3 - 25
- 26 - 127
- 128 - 400
- 401 - 976

Work Area Profile Summary

	Count	Share
Total Primary Jobs	8,720	100.0%
Jobs by Worker Age		
Age 29 or younger	1,868	21.4%
Age 30 to 54	4,471	51.3%
Age 55 or older	2,381	27.3%
Jobs by Earnings		
\$1,250 per month or less	1,991	22.8%
\$1,251 to \$3,333 per month	4,239	48.6%
More than \$3,333 per month	2,490	28.6%
Jobs by NAICS Industry Sector		
Agriculture, Forestry, Fishing and Hunting	384	4.4%
Mining, Quarrying, and Oil and Gas Extraction	41	0.5%
Utilities	64	0.7%
Construction	1,153	13.2%
Manufacturing	834	9.6%
Wholesale Trade	221	2.5%
Retail Trade	1,378	15.8%
Transportation and Warehousing	130	1.5%
Information	27	0.3%
Finance and Insurance	191	2.2%
Real Estate and Rental and Leasing	95	1.1%
Professional, Scientific, and Technical Services	283	3.2%
Management of Companies and Enterprises	40	0.5%
Administration & Support, Waste Management and Remediation	172	2.0%
Educational Services	1,040	11.9%
Health Care and Social Assistance	645	7.4%
Arts, Entertainment, and Recreation	157	1.8%
Accommodation and Food Services	755	8.7%
Other Services (excluding Public Administration)	177	2.0%
Public Administration	933	10.7%

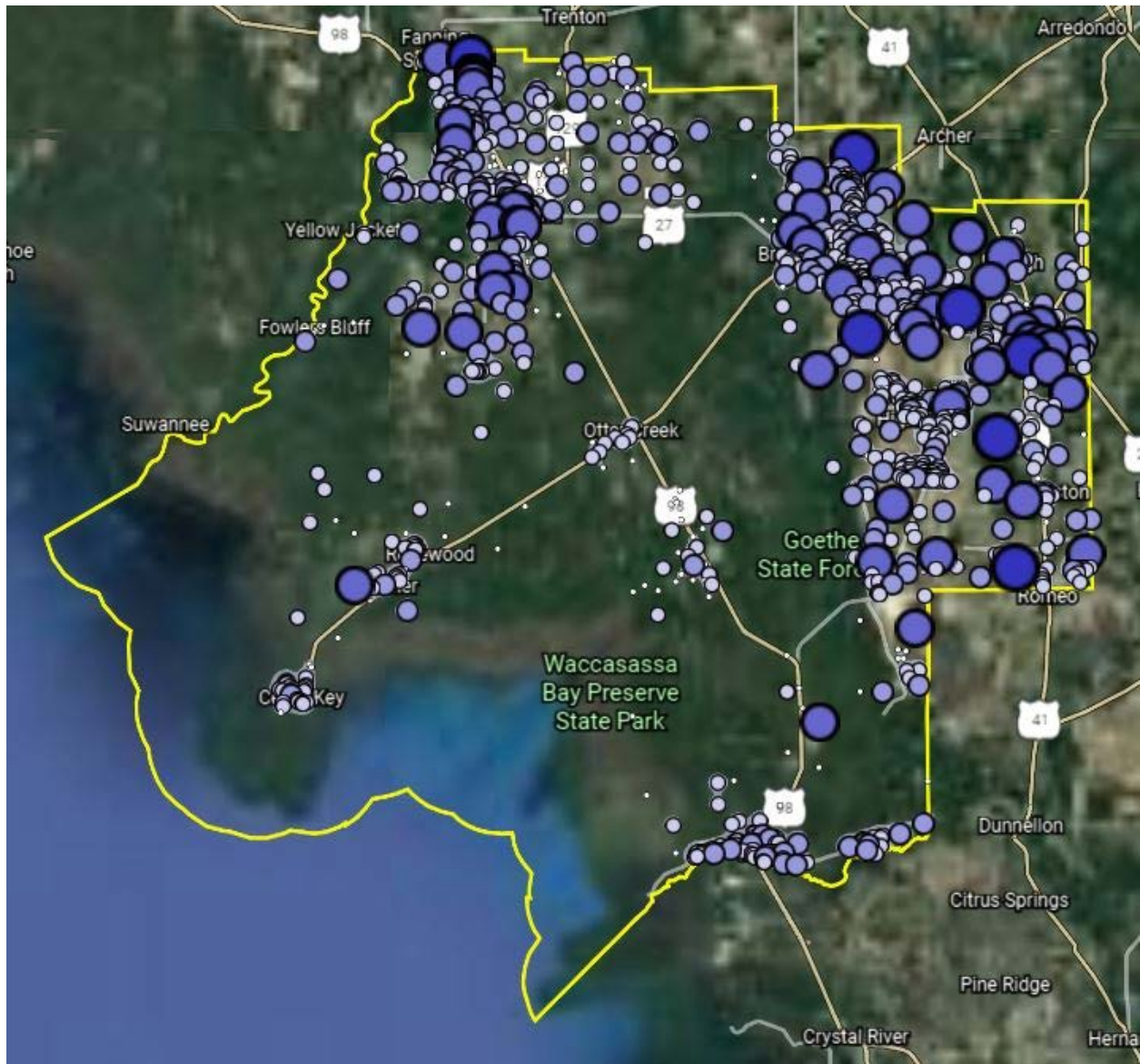
Source: U.S. Census Bureau, OnTheMap Application and Longitudinal Employer-Household Dynamics program.

Work Area Profile Summary - Demographics

	Count	Share
Jobs by Worker Race		
White Alone	7,447	85.4%
Black or African American Alone	1,001	11.5%
American Indian or Alaska Native Alone	47	0.5%
Asian Alone	122	1.4%
Native Hawaiian or Other Pacific Islander Alone	8	0.1%
Two or More Race Groups	95	1.1%
Jobs by Worker Ethnicity		
Not Hispanic or Latino	8,138	93.3%
Hispanic or Latino	582	6.7%
Jobs by Worker Educational Attainment		
Less than high school	1,032	11.8%
High school or equivalent, no college	2,318	26.6%
Some college or Associate degree	2,206	25.3%
Bachelor's degree or advanced degree	1,296	14.9%
Educational attainment not available (workers aged 29 or younger)	1,868	21.4%
Jobs by Worker Sex		
Male	4,654	53.4%
Female	4,066	46.6%

Source: U.S. Census Bureau, OnTheMap Application and Longitudinal Employer-Household Dynamics program.

Where Workers Live in Levy County



Source: U.S. Census Bureau, OnTheMap Application and Longitudinal Employer-Household Dynamics program.

Map Legend

Job Density [Jobs/Sq. Mile]

- 5 - 31
- 32 - 110
- 111 - 242
- 243 - 427
- 428 - 665

Job Count [Jobs/Census Block]

- 1 - 2
- 3 - 11
- 12 - 37
- 38 - 86
- 87 - 168

Home Area Profile Summary

	Count	Share
Total Primary Jobs	13,919	100.0%
Jobs by Worker Age		
Age 29 or younger	3,158	22.7%
Age 30 to 54	7,096	51.0%
Age 55 or older	3,665	26.3%
Jobs by Earnings		
\$1,250 per month or less	2,956	21.2%
\$1,251 to \$3,333 per month	6,441	46.3%
More than \$3,333 per month	4,522	32.5%
Jobs by NAICS Industry Sector		
Agriculture, Forestry, Fishing and Hunting	464	3.3%
Mining, Quarrying, and Oil and Gas Extraction	21	0.2%
Utilities	89	0.6%
Construction	1,224	8.8%
Manufacturing	906	6.5%
Wholesale Trade	411	3.0%
Retail Trade	1,800	12.9%
Transportation and Warehousing	391	2.8%
Information	128	0.9%
Finance and Insurance	390	2.8%
Real Estate and Rental and Leasing	226	1.6%
Professional, Scientific, and Technical Services	602	4.3%
Management of Companies and Enterprises	68	0.5%
Administration & Support, Waste Management and Remediation	608	4.4%
Educational Services	1,556	11.2%
Health Care and Social Assistance	2,133	15.3%
Arts, Entertainment, and Recreation	237	1.7%
Accommodation and Food Services	1,236	8.9%
Other Services (excluding Public Administration)	331	2.4%
Public Administration	1,098	7.9%

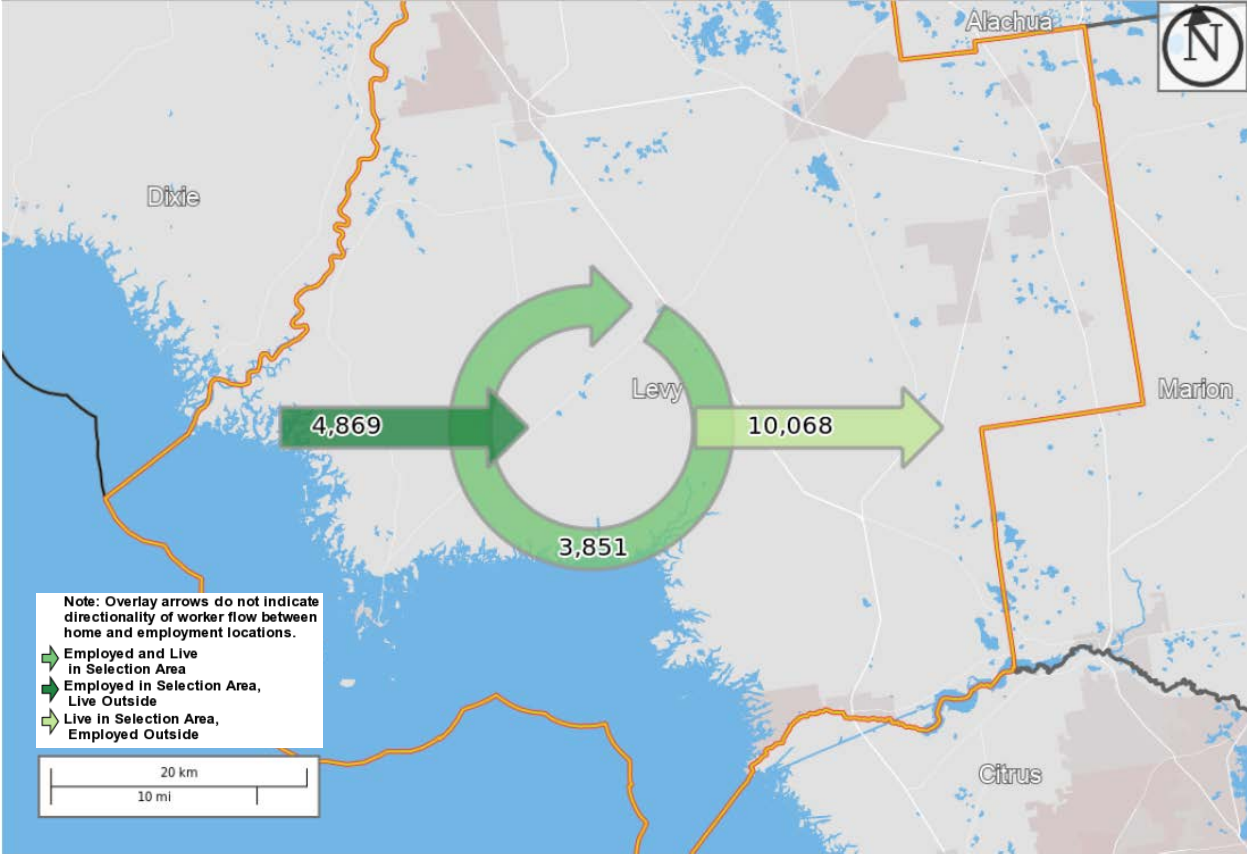
Source: U.S. Census Bureau, OnTheMap Application and Longitudinal Employer-Household Dynamics program.

Home Area Profile Summary - Demographics

	Count	Share
Jobs by Worker Race		
White Alone	11,863	85.2%
Black or African American Alone	1,605	11.5%
American Indian or Alaska Native Alone	69	0.5%
Asian Alone	176	1.3%
Native Hawaiian or Other Pacific Islander Alone	10	0.1%
Two or More Race Groups	196	1.4%
Jobs by Worker Ethnicity		
Not Hispanic or Latino	12,851	92.3%
Hispanic or Latino	1,068	7.7%
Jobs by Worker Educational Attainment		
Less than high school	1,477	10.6%
High school or equivalent, no college	3,416	24.5%
Some college or Associate degree	3,485	25.0%
Bachelor's degree or advanced degree	2,383	17.1%
Educational attainment not available (workers aged 29 or younger)	3,158	22.7%
Jobs by Worker Sex		
Male	6,938	49.8%
Female	6,981	50.2%

Source: U.S. Census Bureau, OnTheMap Application and Longitudinal Employer-Household Dynamics program.

Labor Inflow/Outflow Map



Source: U.S. Census Bureau, OnTheMap Application and Longitudinal Employer-Household Dynamics program.

Of the 8,720 people who are employed in Levy County, 3,851 (44.2%) live and work in the county. There are 4,869 (55.8%) workers who live outside Levy County and work within the county. Of the 13,919 workers who live within Levy County, 10,068 (72.3%) residents work outside the county. There is a net outflow of -5,199 workers from Levy County.

Labor Inflow/Outflow Summary

	Count	Share
Levy County Labor Market Size (Primary Jobs)		
Employed in the Selection Area	8,720	100.0%
Living in the Selection Area	13,919	159.6%
Net Job Inflow (+) or Outflow (-)	-5,199	-
Levy County Labor Force Efficiency (Primary Jobs)		
Living in the Selection Area	13,919	100.0%
Living and Employed in the Selection Area	3,851	27.7%
Living in the Selection Area but Employed Outside	10,068	72.3%
Levy County Employment Efficiency (Primary Jobs)		
Employed in the Selection Area	8,720	100.0%
Employed and Living in the Selection Area	3,851	44.2%
Employed in the Selection Area but Living Outside	4,869	55.8%
Outflow Job Characteristics		
External Jobs Filled by Residents	10,068	100.0%
Workers Aged 29 or younger	2,427	24.1%
Workers Aged 30 to 54	5,137	51.0%
Workers Aged 55 or older	2,504	24.9%
Workers Earning \$1,250 per month or less	2,066	20.5%
Workers Earning \$1,251 to \$3,333 per month	4,480	44.5%
Workers Earning More than \$3,333 per month	3,522	35.0%
Workers in the "Goods Producing" Industry Class	1,716	17.0%
Workers in the "Trade, Transportation, and Utilities" Industry Class	2,130	21.2%
Workers in the "All Other Services" Industry Class	6,222	61.8%

Source: U.S. Census Bureau, OnTheMap Application and Longitudinal Employer-Household Dynamics program.

Labor Inflow/Outflow Summary (continued)

	Count	Share
Inflow Job Characteristics (Primary Jobs)		
Internal Jobs Filled by Outside Workers	4,869	100.0%
Workers Aged 29 or younger	1,137	23.4%
Workers Aged 30 to 54	2,512	51.6%
Workers Aged 55 or older	1,220	25.1%
Workers Earning \$1,250 per month or less	1,101	22.6%
Workers Earning \$1,251 to \$3,333 per month	2,278	46.8%
Workers Earning More than \$3,333 per month	1,490	30.6%
Workers in the "Goods Producing" Industry Class	1,513	31.1%
Workers in the "Trade, Transportation, and Utilities" Industry Class	1,232	25.3%
Workers in the "All Other Services" Industry Class	2,124	43.6%
Interior Flow Job Characteristics (Primary Jobs)		
Internal Jobs Filled by Residents	3,851	100.0%
Workers Aged 29 or younger	731	19.0%
Workers Aged 30 to 54	1,959	50.9%
Workers Aged 55 or older	1,161	30.1%
Workers Earning \$1,250 per month or less	890	23.1%
Workers Earning \$1,251 to \$3,333 per month	1,961	50.9%
Workers Earning More than \$3,333 per month	1,000	26.0%
Workers in the "Goods Producing" Industry Class	899	23.3%
Workers in the "Trade, Transportation, and Utilities" Industry Class	561	14.6%
Workers in the "All Other Services" Industry Class	2,391	62.1%

Source: U.S. Census Bureau, OnTheMap Application and Longitudinal Employer-Household Dynamics program.

Work Destination Summary

Where Workers are Employed Who Live in Levy County

	Count	Share
Total Primary Jobs	13,919	100.0%
Job Counts by Counties Where Workers are Employed - Primary Jobs		
Levy County, FL	3,851	27.7%
Alachua County, FL	3,523	25.3%
Marion County, FL	1,355	9.7%
Duval County, FL	516	3.7%
Citrus County, FL	481	3.5%
Gilchrist County, FL	465	3.3%
Orange County, FL	365	2.6%
Hillsborough County, FL	287	2.1%
Columbia County, FL	235	1.7%
Leon County, FL	179	1.3%
Pinellas County, FL	156	1.1%
Dixie County, FL	155	1.1%
Polk County, FL	114	0.8%
Clay County, FL	113	0.8%
Volusia County, FL	110	0.8%
Sumter County, FL	108	0.8%
Lake County, FL	104	0.7%
Broward County, FL	98	0.7%
Miami-Dade County, FL	98	0.7%
Seminole County, FL	91	0.7%
Pasco County, FL	84	0.6%
Palm Beach County, FL	78	0.6%
Suwannee County, FL	77	0.6%
Brevard County, FL	72	0.5%
St. Johns County, FL	68	0.5%
All Other Locations	1,136	8.2%

Source: U.S. Census Bureau, OnTheMap Application and Longitudinal Employer-Household Dynamics program.

Home Destination Summary

Where Workers Live Who are Employed in Levy County

	Count	Share
Total Primary Jobs	8,720	100.0%
Job Counts by Counties Where Workers Live - Primary Jobs		
Levy County, FL	3,851	44.2%
Alachua County, FL	782	9.0%
Marion County, FL	770	8.8%
Citrus County, FL	421	4.8%
Gilchrist County, FL	394	4.5%
Dixie County, FL	311	3.6%
Duval County, FL	146	1.7%
Hernando County, FL	141	1.6%
Pasco County, FL	121	1.4%
Hillsborough County, FL	109	1.2%
Columbia County, FL	107	1.2%
Sumter County, FL	105	1.2%
Orange County, FL	97	1.1%
Lake County, FL	90	1.0%
Volusia County, FL	86	1.0%
Pinellas County, FL	84	1.0%
Suwannee County, FL	80	0.9%
Polk County, FL	64	0.7%
Brevard County, FL	63	0.7%
Clay County, FL	50	0.6%
Leon County, FL	48	0.6%
Seminole County, FL	44	0.5%
St. Johns County, FL	41	0.5%
Flagler County, FL	37	0.4%
Bradford County, FL	35	0.4%
All Other Locations	643	7.4%

Source: U.S. Census Bureau, OnTheMap Application and Longitudinal Employer-Household Dynamics program.

**Florida Department of Economic Opportunity
Bureau of Workforce Statistics and Economic Research
(WSER)**

**Caldwell Building
MSC G-020
107 E. Madison Street
Tallahassee, Florida 32399-4111
Phone (850) 245-7257**



www.floridajobs.org/labor-market-information