

Summary of Employment, Demographics, and Commuting Patterns for Marion County, Florida



May 2021

Contents

Labor Shed Analysis3

OnTheMap, Census Bureau3

Florida Department of Economic Opportunity, Bureau of Workforce Statistics and Economic Research (WSER)3

Executive Summary4

People QuickFacts.....5

Business and Geography QuickFacts.....7

Labor Force, Employment, and Unemployment7

Population7

Where Workers Work in Marion County8

Work Area Profile Summary9

Work Area Profile Summary - Demographics 10

Where Workers Live in Marion County 11

Home Area Profile Summary 12

Home Area Profile Summary - Demographics..... 13

Labor Inflow/Outflow Map 14

Labor Inflow/Outflow Summary..... 15

Work Destination Summary 17

Home Destination Summary 18

Labor Shed Analysis

A labor shed analysis is defined as where workers work and where workers live relative to a user-defined selection area. This analysis helps to determine where a labor market draws its commuting workers. Labor shed studies can draw comparisons between various geographies including state, Congressional District, Metropolitan Statistical Area (MSA), county, Workforce Investment Area (WIA), Zip Code, and Census tract. By indicating how many of the selection area workers work outside the area, labor sheds can help identify potential pools of workers who would be available for work in the user-defined area.

Labor shed studies provide economic developers and existing or prospective employers a tool to understand the local labor market and make informed expansion and site selection decisions. In addition, labor shed studies can help indicate potential impacts from environmental, social, or economic incidents.

OnTheMap, Census Bureau

OnTheMap is a mapping and reporting tool developed by the U.S. Census Bureau showing employment and home locations of workers with companion reports for user-defined areas. It is the first synthetic data product released by the Census Bureau. OnTheMap is an important tool for Florida to perform labor inflow/outflow analyses and provide commuting data to planning and economic development agencies as well as Regional Workforce Boards. OnTheMap data is also used by the Department of Economic Opportunity to help quantify natural disaster impacts for emergency management agencies based on where workers live and where they work.

OnTheMap integrates existing data from state-supplied administrative records on workers and employers with existing federal censuses, surveys, and other administrative records. The state Labor Market Information (LMI) agencies supply key data from unemployment wage records and from businesses each quarter. The Census Bureau merges the state-supplied data with current demographic information to produce the data found in OnTheMap. By combining data from different administrative sources, censuses, and surveys, the Census Bureau produces local employment information that was not previously available.

Florida Department of Economic Opportunity, Bureau of Workforce Statistics and Economic Research (WSER)

The Florida Department of Economic Opportunity, Bureau of Workforce Statistics and Economic Research (WSER), produces, analyzes, and distributes labor statistics to improve economic decision making. These data are produced as part of the federal/state cooperative statistical program with the U.S. Department of Labor, Bureau of Labor Statistics, and the Employment and Training Administration.

Executive Summary

The analysis of workforce and demographic characteristics, including commuting patterns of Marion County was conducted to provide economic data on the population and labor force living or working in the county. The report is useful for detailing where workers work and live in order to align resources. This report includes population, labor force, and demographics for Marion County.

Workers employed in Marion County are clustered in the Health Care and Social Assistance (16.8%) and Retail Trade (15.5%) industries. Workers living in Marion County are concentrated in the Health Care and Social Assistance (16.2%) and Retail Trade (14.5%) industries.

A detailed examination of commuting patterns for Marion County shows that the county has a net outflow of -20,752 workers. Using the latest annual Census data available, there were 96,900 workers employed in Marion County and 117,652 workers living in Marion County. Of the workers who lived in the county, 57,575 workers (48.9%) were employed outside the county.

With 48.9% of workers who reside in Marion County employed outside the county, Marion County was ranked 20th of 67 for the lowest outflow rankings among Florida counties. Leon (20.9%) had the lowest outflow rate, followed by Miami-Dade (22.0%) and Duval (25.5%). Glades (85.1%), Jefferson (82.2%), and Union (79.6%) had the highest worker outflow rates.

Of the 57,575 Marion County workers employed outside the county, the top destination counties are Orange County (6,744 workers), Lake County (6,238 workers), and Sumter County (5,944 workers). Of the 36,823 Marion County workers living outside the county, the top origin counties are Citrus County (4,178 workers), Lake County (3,038 workers), and Orange County (2,349 workers).

People QuickFacts

	Marion County	Florida	United States
Population			
Population estimates, July 1, 2019, (V2019)	365,579	21,477,737	328,239,523
Population estimates base, April 1, 2010, (V2019)	331,299	18,804,564	308,758,105
Population, percent change - April 1, 2010 (estimates base) to July 1, 2019, (V2019)	10.3%	14.2%	6.3%
Population, Census, April 1, 2010	331,298	18,801,310	308,745,538
Population, Census, April 1, 2020	X	21,538,187	331,449,281
Age and Sex			
Persons under 5 years, percent	4.9%	5.3%	6.0%
Persons under 18 years, percent	18.5%	19.7%	22.3%
Persons 65 years and over, percent	29.2%	20.9%	16.5%
Female persons, percent	52.1%	51.1%	50.8%
Race and Hispanic Origin			
White alone, percent	82.1%	77.3%	76.3%
Black or African American alone, percent(a)	13.5%	16.9%	13.4%
American Indian and Alaska Native alone, percent(a)	0.5%	0.5%	1.3%
Asian alone, percent(a)	1.7%	3.0%	5.9%
Native Hawaiian and Other Pacific Islander alone, percent(a)	0.1%	0.1%	0.2%
Two or More Races, percent	2.0%	2.2%	2.8%
Hispanic or Latino, percent(b)	14.1%	26.4%	18.5%
White alone, not Hispanic or Latino, percent	69.6%	53.2%	60.1%
Population Characteristics			
Veterans, 2015-2019	36,289	1,440,338	18,230,322
Foreign born persons, percent, 2015-2019	7.6%	20.7%	13.6%
Housing			
Housing units, July 1, 2019, (V2019)	173,190	9,673,682	139,684,244
Owner-occupied housing unit rate, 2015-2019	75.0%	65.4%	64.0%
Median value of owner-occupied housing units, 2015-2019	\$139,900	\$215,300	\$217,500
Median selected monthly owner costs -with a mortgage, 2015-2019	\$1,099	\$1,503	\$1,595
Median selected monthly owner costs -without a mortgage, 2015-2019	\$374	\$505	\$500
Median gross rent, 2015-2019	\$896	\$1,175	\$1,062
Building permits, 2020	3,827	164,074	1,471,141

Legend

The vintage year (e.g., V2019) refers to the final year of the series (2010 thru 2019). Different vintage years of estimates are not comparable.

Fact Notes

(a) Includes persons reporting only one race

(b) Hispanics may be of any race, so also are included in applicable race categories

Source: U.S. Census Bureau, State & County QuickFacts.

People QuickFacts (continued)

	Marion County	Florida	United States
Families & Living Arrangements			
Households, 2015-2019	139,172	7,736,311	120,756,048
Persons per household, 2015-2019	2.47	2.65	2.62
Living in same house 1 year ago, percent of persons age 1 year+, 2015-2019	86.3%	84.5%	85.8%
Language other than English spoken at home, percent of persons age 5 years+, 2015-2019	12.3%	29.4%	21.6%
Computer and Internet Use			
Households with a computer, percent, 2015-2019	87.8%	91.5%	90.3%
Households with a broadband Internet subscription, percent, 2015-2019	80.7%	83.0%	82.7%
Education			
High school graduate or higher, percent of persons age 25 years+, 2015-2019	87.6%	88.2%	88.0%
Bachelor's degree or higher, percent of persons age 25 years+, 2015-2019	20.1%	29.9%	32.1%
Health			
With a disability, under age 65 years, percent, 2015-2019	11.4%	8.6%	8.6%
Persons without health insurance, under age 65 years, percent	17.6%	16.3%	9.5%
Economy			
In civilian labor force, total, percent of population age 16 years+, 2015-2019	46.5%	58.5%	63.0%
In civilian labor force, female, percent of population age 16 years+, 2015-2019	43.6%	54.3%	58.3%
Total accommodation and food services sales, 2012 (\$1,000)(c)	375,178	49,817,925	708,138,598
Total health care and social assistance receipts/revenue, 2012 (\$1,000)(c)	1,874,027	124,061,425	2,040,441,203
Total manufacturers shipments, 2012 (\$1,000)(c)	1,471,198	96,924,106	5,696,729,632
Total merchant wholesaler sales, 2012 (\$1,000)(c)	1,719,344	252,626,608	5,208,023,478
Total retail sales, 2012 (\$1,000)(c)	4,263,626	273,867,145	4,219,821,871
Total retail sales per capita, 2012(c)	\$12,722	\$14,177	\$13,443
Transportation			
Mean travel time to work (minutes), workers age 16 years+, 2015-2019	25.7	27.8	26.9
Income & Poverty			
Median household income (in 2019 dollars), 2015-2019	\$45,371	\$55,660	\$62,843
Per capita income in past 12 months (in 2019 dollars), 2015-2019	\$25,839	\$31,619	\$34,103
Persons in poverty, percent	14.9%	12.7%	10.5%

Legend

The vintage year (e.g., V2019) refers to the final year of the series (2010 thru 2019). Different vintage years of estimates are not comparable.

Fact Notes

(c) Economic Census - Puerto Rico data are not comparable to U.S. Economic Census data

Source: U.S. Census Bureau, State & County QuickFacts.

Business and Geography QuickFacts

	Marion County	Florida	United States
Businesses			
Total employer establishments, 2019	7,360	574,51	7,959,103
Total employment, 2019	89,254	8,860,04	132,989,428
Total annual payroll, 2019 (\$1,000)	3,326,167	426,908,31	7,428,553,593
Total employment, percent change, 2018-2019	5.9%	2.2%	1.6%
Total nonemployer establishments, 2018	27,086	2,388,050	26,485,532
All firms, 2012	25,658	2,100,187	27,626,360
Men-owned firms, 2012	12,862	1,084,885	14,844,597
Women-owned firms, 2012	9,940	807,817	9,878,397
Minority-owned firms, 2012	6,153	926,112	7,952,386
Nonminority-owned firms, 2012	18,671	1,121,749	18,987,918
Veteran-owned firms, 2012	2,854	185,756	2,521,682
Nonveteran-owned firms, 2012	21,636	1,846,686	24,070,685
Geography			
Population per square mile, 2010	209.1	350.6	87.4
Land area in square miles, 2010	1,584.55	53,624.76	3,531,905.43
FIPS Code	12083	12	1

Source: U.S. Census Bureau, State & County QuickFacts.

Labor Force, Employment, and Unemployment

	April 2021				April 2020			
	LABOR	EMPLOY-	UNEMPLOYMENT		LABOR	EMPLOY-	UNEMPLOYMENT	
	FORCE	MENT	LEVEL	RATE (%)	FORCE	MENT	LEVEL	RATE (%)
Workforce Region 10	210,741	199,045	11,696	5.5	193,666	168,309	25,357	13.1
Citrus County	48,749	45,731	3,018	6.2	44,820	37,888	6,932	15.5
Levy County	17,424	16,576	848	4.9	15,853	14,142	1,711	10.8
Marion County	144,568	136,738	7,830	5.4	132,993	116,279	16,714	12.6
Florida	10,357,000	9,825,000	532,000	5.1	9,718,000	8,369,000	1,349,000	13.9
United States	160,379,000	151,160,000	9,220,000	5.7	155,830,000	133,326,000	22,504,000	14.4

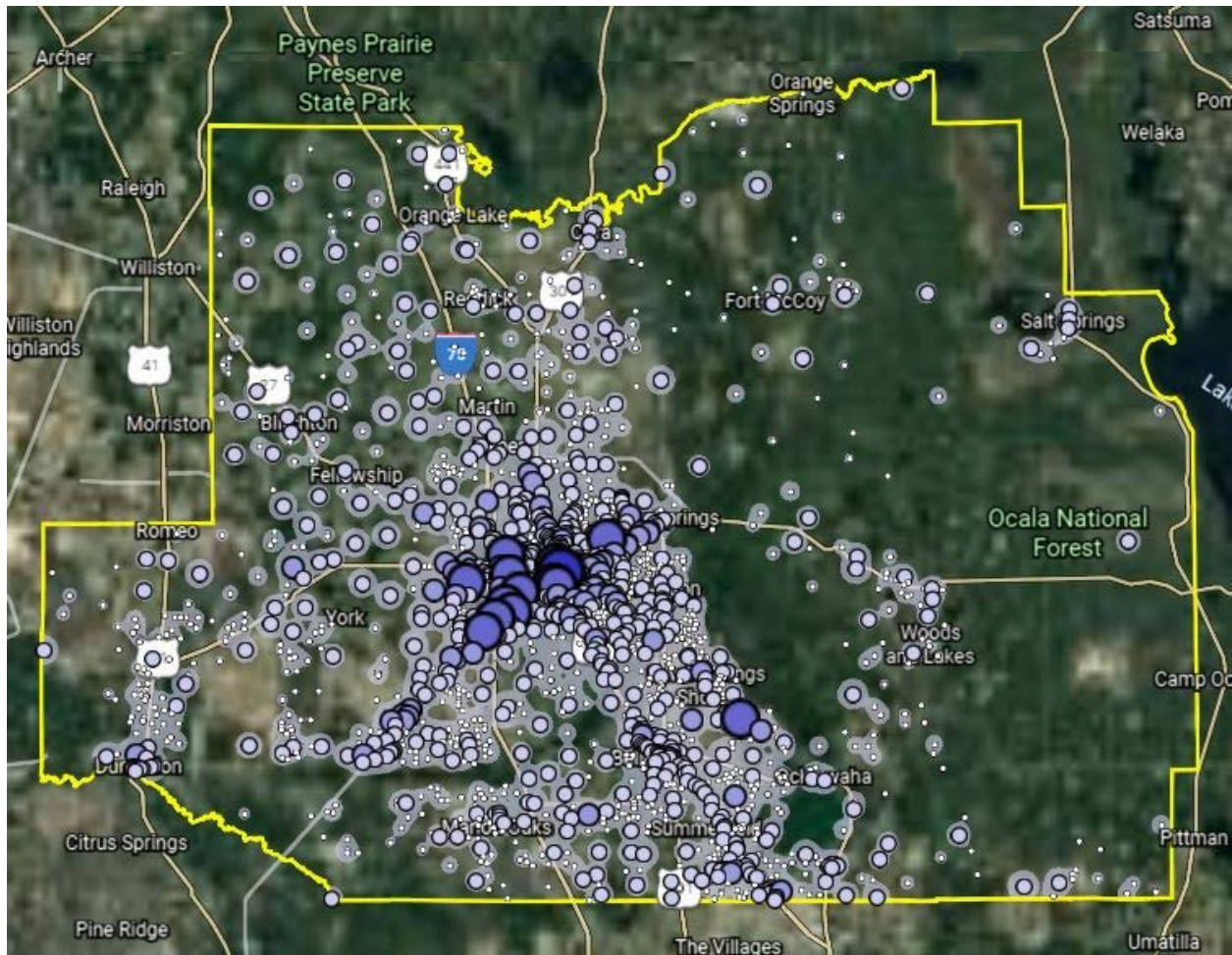
Source: U.S. Department of Labor, Bureau of Labor Statistics, Local Area Unemployment Statistics.

Population

	Population Estimate (as of July 1)							
	2012	2013	2014	2015	2016	2017	2018	2019
Workforce Region 10	512,876	513,345	516,129	522,070	530,110	539,030	547,542	556,739
Citrus County	139,180	138,829	138,828	140,287	142,804	145,415	147,682	149,657
Levy County	39,823	39,433	39,296	39,601	39,837	40,276	40,798	41,503
Marion County	333,873	335,083	338,005	342,182	347,469	353,339	359,062	365,579
Florida	19,297,822	19,545,621	19,845,911	20,209,042	20,613,477	20,963,613	21,244,317	21,477,737
United States	313,830,990	315,993,715	318,301,008	320,635,163	322,941,311	324,985,539	326,687,501	328,239,523

Source: U.S. Census Bureau, Population Division.

Where Workers Work in Marion County



Source: U.S. Census Bureau, OnTheMap Application and Longitudinal Employer-Household Dynamics program.

Map Legend

Job Density [Jobs/Sq. Mile]

- 5 - 945
- 946 - 3,765
- 3,766 - 8,466
- 8,467 - 15,048
- 15,049 - 23,510

Job Count [Jobs/Census Block]

- 1 - 12
- 13 - 191
- 192 - 963
- 964 - 3,043
- 3,044 - 7,430

Work Area Profile Summary

	Count	Share
Total Primary Jobs	96,900	100.0%
Jobs by Worker Age		
Age 29 or younger	20,935	21.6%
Age 30 to 54	50,064	51.7%
Age 55 or older	25,901	26.7%
Jobs by Earnings		
\$1,250 per month or less	20,744	21.4%
\$1,251 to \$3,333 per month	43,238	44.6%
More than \$3,333 per month	32,918	34.0%
Jobs by NAICS Industry Sector		
Agriculture, Forestry, Fishing and Hunting	1,770	1.8%
Mining, Quarrying, and Oil and Gas Extraction	113	0.1%
Utilities	258	0.3%
Construction	7,168	7.4%
Manufacturing	7,717	8.0%
Wholesale Trade	3,796	3.9%
Retail Trade	15,060	15.5%
Transportation and Warehousing	2,869	3.0%
Information	656	0.7%
Finance and Insurance	2,196	2.3%
Real Estate and Rental and Leasing	1,513	1.6%
Professional, Scientific, and Technical Services	3,807	3.9%
Management of Companies and Enterprises	178	0.2%
Administration & Support, Waste Management and Remediation	4,685	4.8%
Educational Services	9,233	9.5%
Health Care and Social Assistance	16,309	16.8%
Arts, Entertainment, and Recreation	2,376	2.5%
Accommodation and Food Services	9,427	9.7%
Other Services (excluding Public Administration)	2,525	2.6%
Public Administration	5,244	5.4%

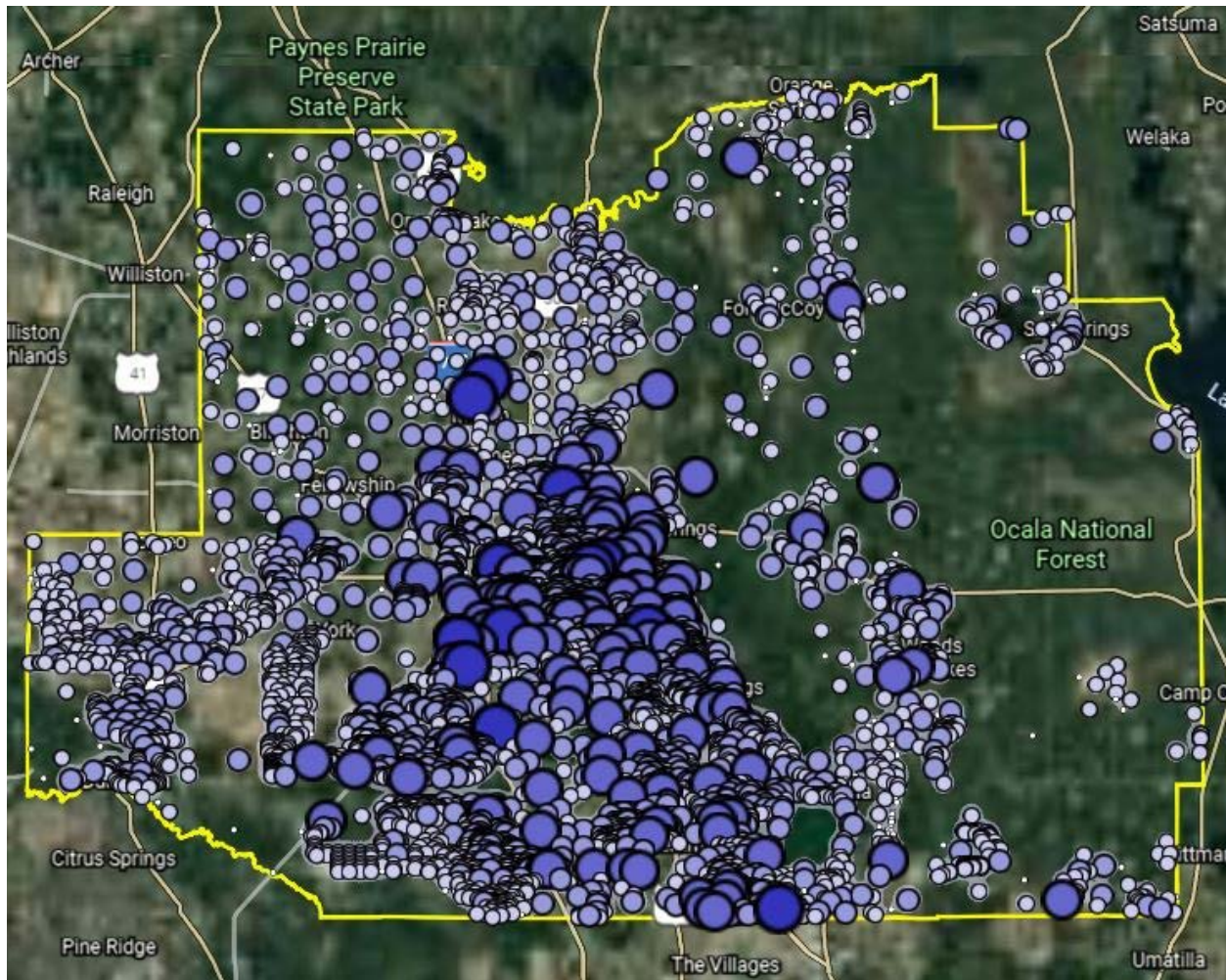
Source: U.S. Census Bureau, OnTheMap Application and Longitudinal Employer-Household Dynamics program.

Work Area Profile Summary - Demographics

	Count	Share
Jobs by Worker Race		
White Alone	78,694	81.2%
Black or African American Alone	14,028	14.5%
American Indian or Alaska Native Alone	427	0.4%
Asian Alone	2,255	2.3%
Native Hawaiian or Other Pacific Islander Alone	94	0.1%
Two or More Race Groups	1,402	1.4%
Jobs by Worker Ethnicity		
Not Hispanic or Latino	84,065	86.8%
Hispanic or Latino	12,835	13.2%
Jobs by Worker Educational Attainment		
Less than high school	11,104	11.5%
High school or equivalent, no college	23,262	24.0%
Some college or Associate degree	24,725	25.5%
Bachelor's degree or advanced degree	16,874	17.4%
Educational attainment not available (workers aged 29 or younger)	20,935	21.6%
Jobs by Worker Sex		
Male	47,872	49.4%
Female	49,028	50.6%

Source: U.S. Census Bureau, OnTheMap Application and Longitudinal Employer-Household Dynamics program.

Where Workers Live in Marion County



Source: U.S. Census Bureau, OnTheMap Application and Longitudinal Employer-Household Dynamics program.

Map Legend

Job Density [Jobs/Sq. Mile]

- 5 - 81
- 82 - 311
- 312 - 694
- 695 - 1,231
- 1,232 - 1,921

Job Count [Jobs/Census Block]

- 1 - 2
- 3 - 19
- 20 - 96
- 97 - 302
- 303 - 736

Home Area Profile Summary

	Count	Share
Total Primary Jobs	117,652	100.0%
Jobs by Worker Age		
Age 29 or younger	25,752	21.9%
Age 30 to 54	60,139	51.1%
Age 55 or older	31,761	27.0%
Jobs by Earnings		
\$1,250 per month or less	25,481	21.7%
\$1,251 to \$3,333 per month	52,561	44.7%
More than \$3,333 per month	39,610	33.7%
Jobs by NAICS Industry Sector		
Agriculture, Forestry, Fishing and Hunting	1,591	1.4%
Mining, Quarrying, and Oil and Gas Extraction	118	0.1%
Utilities	548	0.5%
Construction	9,427	8.0%
Manufacturing	7,703	6.5%
Wholesale Trade	4,342	3.7%
Retail Trade	17,031	14.5%
Transportation and Warehousing	3,569	3.0%
Information	1,241	1.1%
Finance and Insurance	3,378	2.9%
Real Estate and Rental and Leasing	1,999	1.7%
Professional, Scientific, and Technical Services	5,463	4.6%
Management of Companies and Enterprises	695	0.6%
Administration & Support, Waste Management and Remediation	7,109	6.0%
Educational Services	9,942	8.5%
Health Care and Social Assistance	19,043	16.2%
Arts, Entertainment, and Recreation	2,733	2.3%
Accommodation and Food Services	12,256	10.4%
Other Services (excluding Public Administration)	3,270	2.8%
Public Administration	6,194	5.3%

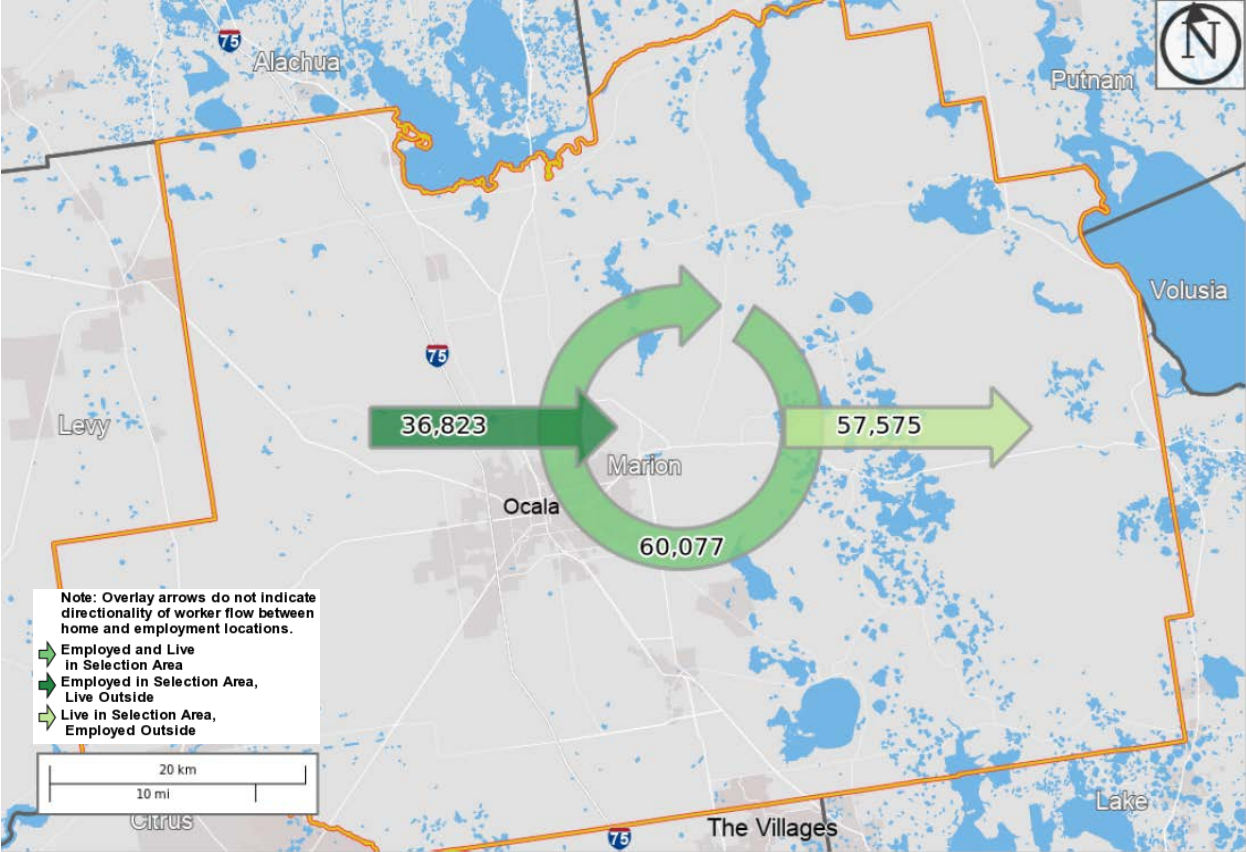
Source: U.S. Census Bureau, OnTheMap Application and Longitudinal Employer-Household Dynamics program.

Home Area Profile Summary - Demographics

	Count	Share
Jobs by Worker Race		
White Alone	96,556	82.1%
Black or African American Alone	16,251	13.8%
American Indian or Alaska Native Alone	545	0.5%
Asian Alone	2,492	2.1%
Native Hawaiian or Other Pacific Islander Alone	111	0.1%
Two or More Race Groups	1,697	1.4%
Jobs by Worker Ethnicity		
Not Hispanic or Latino	101,693	86.4%
Hispanic or Latino	15,959	13.6%
Jobs by Worker Educational Attainment		
Less than high school	13,364	11.4%
High school or equivalent, no college	27,482	23.4%
Some college or Associate degree	29,982	25.5%
Bachelor's degree or advanced degree	21,072	17.9%
Educational attainment not available (workers aged 29 or younger)	25,752	21.9%
Jobs by Worker Sex		
Male	57,910	49.2%
Female	59,742	50.8%

Source: U.S. Census Bureau, OnTheMap Application and Longitudinal Employer-Household Dynamics program.

Labor Inflow/Outflow Map



Source: U.S. Census Bureau, OnTheMap Application and Longitudinal Employer-Household Dynamics program.

Of the 96,900 people who are employed in Marion County, 60,077 (62.0%) live and work in the county. There are 36,823 (38.0%) workers who live outside Marion County and work within the county. Of the 117,652 workers who live within Marion County, 57,575 (48.9%) residents work outside the county. There is a net outflow of -20,752 workers from Marion County.

Labor Inflow/Outflow Summary

	Count	Share
Marion County Labor Market Size (Primary Jobs)		
Employed in the Selection Area	96,900	100.0%
Living in the Selection Area	117,652	121.4%
Net Job Inflow (+) or Outflow (-)	-20,752	-
Marion County Labor Force Efficiency (Primary Jobs)		
Living in the Selection Area	117,652	100.0%
Living and Employed in the Selection Area	60,077	51.1%
Living in the Selection Area but Employed Outside	57,575	48.9%
Marion County Employment Efficiency (Primary Jobs)		
Employed in the Selection Area	96,900	100.0%
Employed and Living in the Selection Area	60,077	62.0%
Employed in the Selection Area but Living Outside	36,823	38.0%
Outflow Job Characteristics		
External Jobs Filled by Residents	57,575	100.0%
Workers Aged 29 or younger	14,115	24.5%
Workers Aged 30 to 54	28,391	49.3%
Workers Aged 55 or older	15,069	26.2%
Workers Earning \$1,250 per month or less	13,675	23.8%
Workers Earning \$1,251 to \$3,333 per month	24,868	43.2%
Workers Earning More than \$3,333 per month	19,032	33.1%
Workers in the "Goods Producing" Industry Class	7,894	13.7%
Workers in the "Trade, Transportation, and Utilities" Industry Class	16,176	28.1%
Workers in the "All Other Services" Industry Class	33,505	58.2%

Source: U.S. Census Bureau, OnTheMap Application and Longitudinal Employer-Household Dynamics program.

Labor Inflow/Outflow Summary (continued)

	Count	Share
Inflow Job Characteristics (Primary Jobs)		
Internal Jobs Filled by Outside Workers	36,823	100.0%
Workers Aged 29 or younger	9,298	25.3%
Workers Aged 30 to 54	18,316	49.7%
Workers Aged 55 or older	9,209	25.0%
Workers Earning \$1,250 per month or less	8,938	24.3%
Workers Earning \$1,251 to \$3,333 per month	15,545	42.2%
Workers Earning More than \$3,333 per month	12,340	33.5%
Workers in the "Goods Producing" Industry Class	5,823	15.8%
Workers in the "Trade, Transportation, and Utilities" Industry Class	12,669	34.4%
Workers in the "All Other Services" Industry Class	18,331	49.8%
Interior Flow Job Characteristics (Primary Jobs)		
Internal Jobs Filled by Residents	60,077	100.0%
Workers Aged 29 or younger	11,637	19.4%
Workers Aged 30 to 54	31,748	52.8%
Workers Aged 55 or older	16,692	27.8%
Workers Earning \$1,250 per month or less	11,806	19.7%
Workers Earning \$1,251 to \$3,333 per month	27,693	46.1%
Workers Earning More than \$3,333 per month	20,578	34.3%
Workers in the "Goods Producing" Industry Class	10,945	18.2%
Workers in the "Trade, Transportation, and Utilities" Industry Class	9,314	15.5%
Workers in the "All Other Services" Industry Class	39,818	66.3%

Source: U.S. Census Bureau, OnTheMap Application and Longitudinal Employer-Household Dynamics program.

Work Destination Summary

Where Workers are Employed Who Live in Marion County

	Count	Share
Total Primary Jobs	117,652	100.0%
Job Counts by Counties Where Workers are Employed - Primary Jobs		
Marion County, FL	60,077	51.1%
Orange County, FL	6,744	5.7%
Lake County, FL	6,238	5.3%
Sumter County, FL	5,944	5.1%
Alachua County, FL	5,432	4.6%
Hillsborough County, FL	4,376	3.7%
Duval County, FL	2,826	2.4%
Pinellas County, FL	2,549	2.2%
Citrus County, FL	2,254	1.9%
Polk County, FL	1,989	1.7%
Seminole County, FL	1,937	1.6%
Volusia County, FL	1,813	1.5%
Pasco County, FL	1,160	1.0%
Palm Beach County, FL	983	0.8%
Broward County, FL	947	0.8%
Hernando County, FL	871	0.7%
Levy County, FL	770	0.7%
Brevard County, FL	753	0.6%
Osceola County, FL	752	0.6%
Miami-Dade County, FL	688	0.6%
Lee County, FL	611	0.5%
Leon County, FL	610	0.5%
Manatee County, FL	563	0.5%
St. Johns County, FL	558	0.5%
Sarasota County, FL	537	0.5%
All Other Locations	5,670	4.8%

Source: U.S. Census Bureau, OnTheMap Application and Longitudinal Employer-Household Dynamics program.

Home Destination Summary

Where Workers Live Who are Employed in Marion County

	Count	Share
Total Primary Jobs	96,900	100.0%
Job Counts by Counties Where Workers Live - Primary Jobs		
Marion County, FL	60,077	62.0%
Citrus County, FL	4,178	4.3%
Lake County, FL	3,038	3.1%
Orange County, FL	2,349	2.4%
Alachua County, FL	2,219	2.3%
Duval County, FL	2,102	2.2%
Hillsborough County, FL	1,796	1.9%
Volusia County, FL	1,771	1.8%
Sumter County, FL	1,694	1.7%
Levy County, FL	1,355	1.4%
Pasco County, FL	1,317	1.4%
Pinellas County, FL	1,223	1.3%
Polk County, FL	1,166	1.2%
Seminole County, FL	1,096	1.1%
Putnam County, FL	903	0.9%
Flagler County, FL	805	0.8%
Brevard County, FL	773	0.8%
St. Johns County, FL	551	0.6%
Osceola County, FL	543	0.6%
Hernando County, FL	541	0.6%
Clay County, FL	529	0.5%
Lee County, FL	456	0.5%
Palm Beach County, FL	421	0.4%
Leon County, FL	400	0.4%
Broward County, FL	378	0.4%
All Other Locations	5,219	5.4%

Source: U.S. Census Bureau, OnTheMap Application and Longitudinal Employer-Household Dynamics program.

**Florida Department of Economic Opportunity
Bureau of Workforce Statistics and Economic Research
(WSER)**

**Caldwell Building
MSC G-020
107 E. Madison Street
Tallahassee, Florida 32399-4111
Phone (850) 245-7257**



www.floridajobs.org/labor-market-information